

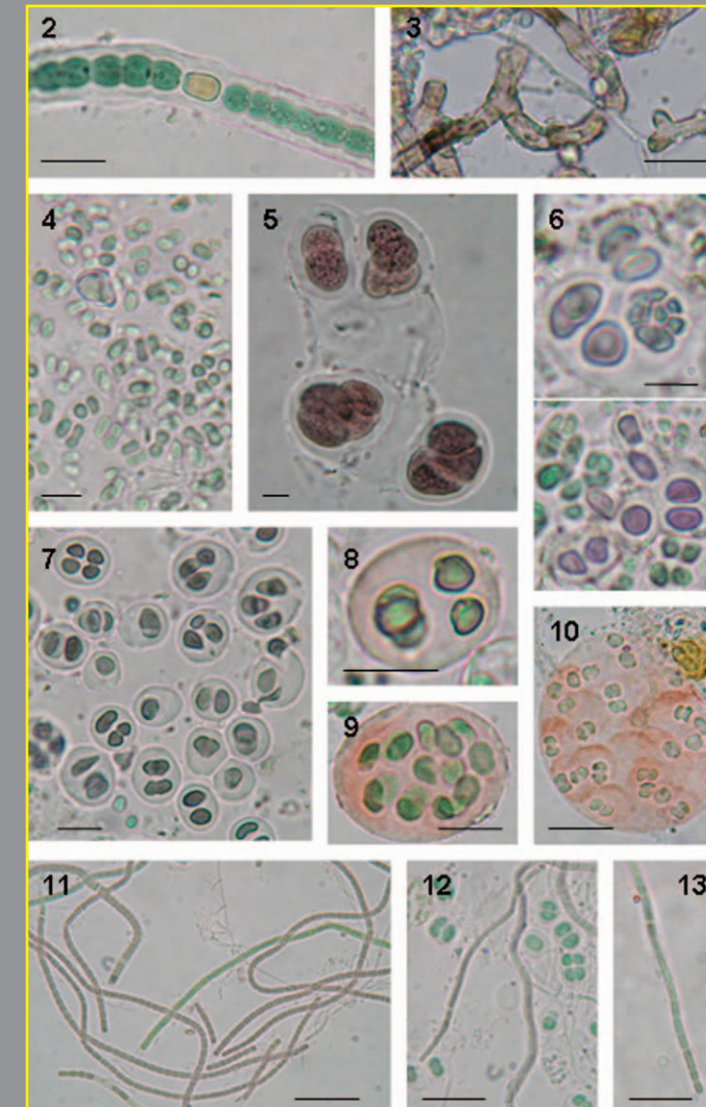
Journal of Cave and Karst Studies

Volume 72 Number 1 April 2010

Article	1
Stochastic Modeling of Surface Stream Flow at Different Time Scales: Sangsoorakh Karst Basin, Iran <i>M. Reza Ghanbarpour, Karim C. Abbaspour, Goudarz Jalalvand, and Ghodsieh Ashtiani Moghaddam</i>	
Article	11
Distribution of Cyanobacteria at the Gelada Cave (Spain) by Physical Parameters <i>Antonia Martínez and Antonia Dolores Asencio</i>	
Article	21
Direct Measurement of Present-Day Tectonic Movement and Associated Radon Flux in Postojna Cave, Slovenia <i>Stanka Šebela, Janja Vaupotič, Blahoslav Košík, and Josef Stemberk</i>	
Article	35
Developing a GIS-Based Inventory for the Implementation of Cave Management Protocols in Withlacoochee State Forest, Florida <i>Grant L. Harley, Philip P. Reeder, Jason S. Polk, and Philip E. van Beynen</i>	
Article	43
The Sulfidic Thermal Caves of Acquasanta Terme (Central Italy) <i>Sandro Galdenzi, Filippo Cocchioni, Giampaolo Filippini, Luciana Morichetti, Stefania Scuri, Rosario Selvaggio, and Mario Cocchioni</i>	
Book Review	59
Subterranean Twin Cities	

JOURNAL OF CAVE AND KARST STUDIES

April 2010
Volume 72, Number 1
ISSN 1090-6924
A Publication of the National
Speleological Society



IN THIS ISSUE:

CYANOBACTERIA IN GELADA CAVE, SPAIN... RADON FLUX IN POSTOJNA CAVE, SLOVENIA... CAVE MANAGEMENT IN WITHLACOOCHEE STATE FOREST, FLORIDA... AND MORE...

GUIDE TO AUTHORS

Published By
The National Speleological Society

Editor-in-Chief
Malcolm S. Field

National Center of Environmental
Assessment (8623P)
Office of Research and Development
U.S. Environmental Protection Agency
1200 Pennsylvania Avenue NW
Washington, DC 20460-0001
703-347-8601 Voice 703-347-8692 Fax
field.malcolm@epa.gov

Production Editor

Scott A. Engel
CH2M HILL

700 Main Street, Suite 400
Baton Rouge, LA 70802
225-381-8454
scott.engel@ch2m.com

Journal Copy Editor

Bill Mixon

JOURNAL ADVISORY BOARD

Penelope Boston

Dave Culver

Derek Ford

Louise Hose

Wil Orndorf

Benjamin Schwartz

Elizabeth White

William White

Carol Wicks

BOARD OF EDITORS

Anthropology
George Crothers

University of Kentucky
211 Lafferty Hall
Lexington, KY 40506-0024
859-257-8208 • george.crothers@uky.edu

Conservation-Life Sciences

Julian J. Lewis & Salisa L. Lewis

Lewis & Associates, LLC.
Cave, Karst & Groundwater Biological Consulting
17903 State Road 60 • Borden, IN 47106-8608
812-283-6120 • lewisbioconsult@aol.com

Earth Sciences

Gregory S. Springer

Department of Geological Sciences
316 Clippinger Laboratories
Ohio University • Athens, OH 45701
740-593-9436 • springeg@ohio.edu

Exploration

Paul Burger

Cave Resources Office
3225 National Parks Highway • Carlsbad, NM 88220
505-785-3106 • paul_burger@nps.gov

Microbiology

Kathleen H. Lavoie

Department of Biology
State University of New York
Plattsburgh, NY 12901
518-564-3150 • lavoiekh@plattsburgh.edu

Paleontology

Greg McDonald

Park Museum Management Program
National Park Service
1201 Oakridge Dr. Suite 150
Fort Collins, CO 80525
970-267-2167 • greg_mcdonald@nps.gov

Social Sciences

Joseph C. Douglas

History Department
Volunteer State Community College
1480 Nashville Pike • Gallatin, TN 37066
615-230-3241 • joe.douglas@volstate.edu

Book Reviews

Arthur N. Palmer & Margaret V. Palmer

Department of Earth Sciences
State University of New York
Oneonta, NY 13820-4015
607-432-6024 • palmeran@oneonta.edu

The *Journal of Cave and Karst Studies* is a multidisciplinary journal devoted to cave and karst research. The *Journal* is seeking original, unpublished manuscripts concerning the scientific study of caves or other karst features. Authors do not need to be members of the National Speleological Society, but preference is given to manuscripts of importance to North American speleology.

LANGUAGES: The *Journal of Cave and Karst Studies* uses American-style English as its standard language and spelling style, with the exception of allowing a second abstract in another language when room allows. In the case of proper names, the *Journal* tries to accommodate other spellings and punctuation styles. In cases where the Editor-in-Chief finds it appropriate to use non-English words outside of proper names (generally where no equivalent English word exists), the *Journal* italicizes them. However, the common abbreviations i.e., e.g., et al., and etc. should appear in roman text. Authors are encouraged to write for our combined professional and amateur readerships.

CONTENT: Each paper will contain a title with the authors' names and addresses, an abstract, and the text of the paper, including a summary or conclusions section. Acknowledgments and references follow the text.

ABSTRACTS: An abstract stating the essential points and results must accompany all articles. An abstract is a summary, not a promise of what topics are covered in the paper.

STYLE: The *Journal* consults The Chicago Manual of Style on most general style issues.

REFERENCES: In the text, references to previously published work should be followed by the relevant author's name and date (and page number, when appropriate) in parentheses. All cited references are alphabetical at the end of the manuscript with senior author's last name first, followed by date of publication, title, publisher, volume, and page numbers. Geological Society of America format should be used (see <http://www.geosociety.org/pubs/geoguid5.htm>). Please do not abbreviate periodical titles. Web references are acceptable when deemed appropriate. The references should follow the style of: Author (or publisher), year, Webpage title: Publisher (if a specific author is available), full URL (e.g., <http://www.usgs.gov/citguide.html>) and date when the web site was accessed in brackets; for example [accessed July 16, 2002]. If there are specific authors given, use their name and list the responsible organization as publisher. Because of the ephemeral nature of websites, please provide the specific date. Citations within the text should read: (Author, Year).

SUBMISSION: Effective July 2007, all manuscripts are to be submitted via AllenTrack, a web-based system for online submission. The web address is <http://jcks.allentrack2.net>. Instructions are provided at that address. At your first visit, you will be prompted to establish a login and password, after which you will enter information about your manuscript (e.g., authors and addresses, manuscript title, abstract, etc.). You will then enter your manuscript, tables, and figure files separately or all together as part of the manuscript. Manuscript files can be uploaded as DOC, WPD, RTF, TXT, or LaTeX. A DOC template with additional manuscript

specifications may be downloaded. (Note: LaTeX files should not use any unusual style files; a LaTeX template and BiBTeX file for the *Journal* may be downloaded or obtained from the Editor-in-Chief.) Table files can be uploaded as DOC, WPD, RTF, TXT, or LaTeX files, and figure files can be uploaded as TIFF, EPS, AI, or CDR files. Alternatively, authors may submit manuscripts as PDF or HTML files, but if the manuscript is accepted for publication, the manuscript will need to be submitted as one of the accepted file types listed above. Manuscripts must be typed, double spaced, and single-sided. Manuscripts should be no longer than 6,000 words plus tables and figures, but exceptions are permitted on a case-by-case basis. Authors of accepted papers exceeding this limit may have to pay a current page charge for the extra pages unless decided otherwise by the Editor-in-Chief. Extensive supporting data will be placed on the *Journal's* website with a paper copy placed in the NSS archives and library. The data that are used within a paper must be made available. Authors may be required to provide supporting data in a fundamental format, such as ASCII for text data or comma-delimited ASCII for tabular data.

DISCUSSIONS: Critical discussions of papers previously published in the *Journal* are welcome. Authors will be given an opportunity to reply. Discussions and replies must be limited to a maximum of 1000 words and discussions will be subject to review before publication. Discussions must be within 6 months after the original article appears.

MEASUREMENTS: All measurements will be in Systeme Internationale (metric) except when quoting historical references. Other units will be allowed where necessary if placed in parentheses and following the SI units.

FIGURES: Figures and lettering must be neat and legible. Figure captions should be on a separate sheet of paper and not within the figure. Figures should be numbered in sequence and referred to in the text by inserting (Fig. x). Most figures will be reduced, hence the lettering should be large. Photographs must be sharp and high contrast. Color will generally only be printed at author's expense.

TABLES: See <http://www.caves.org/pub/journal/PDF/Tables.pdf> to get guidelines for table layout.

COPYRIGHT AND AUTHOR'S RESPONSIBILITIES: It is the author's responsibility to clear any copyright or acknowledgement matters concerning text, tables, or figures used. Authors should also ensure adequate attention to sensitive or legal issues such as land owner and land manager concerns or policies.

PROCESS: All submitted manuscripts are sent out to at least two experts in the field. Reviewed manuscripts are then returned to the author for consideration of the referees' remarks and revision, where appropriate. Revised manuscripts are returned to the appropriate Associate Editor who then recommends acceptance or rejection. The Editor-in-Chief makes final decisions regarding publication. Upon acceptance, the senior author will be sent one set of PDF proofs for review. Examine the current issue for more information about the format used.

ELECTRONIC FILES: The *Journal* is printed at high resolution. Illustrations must be a minimum of 300 dpi for acceptance.

The *Journal of Cave and Karst Studies* (ISSN 1090-6924, CPM Number #40065056) is a multi-disciplinary, refereed journal published three times a year by the National Speleological Society, 2813 Cave Avenue, Huntsville, Alabama 35810-4431 USA; Phone (256) 852-1300; Fax (256) 851-9241, email: nss@caves.org; World Wide Web: <http://www.caves.org/pub/journal/>. Check the *Journal* website for subscription rates. Back issues and cumulative indices are available from the NSS office.

POSTMASTER: send address changes to the *Journal of Cave and Karst Studies*, 2813 Cave Avenue, Huntsville, Alabama 35810-4431 USA.

The *Journal of Cave and Karst Studies* is covered by the following ISI Thomson Services Science Citation Index Expanded, ISI Alerting Services, and Current Contents/Physical, Chemical, and Earth Sciences.

Copyright © 2010 by the National Speleological Society, Inc.

Front cover: Plate 1 from Martinez and Ascencio in this issue.

