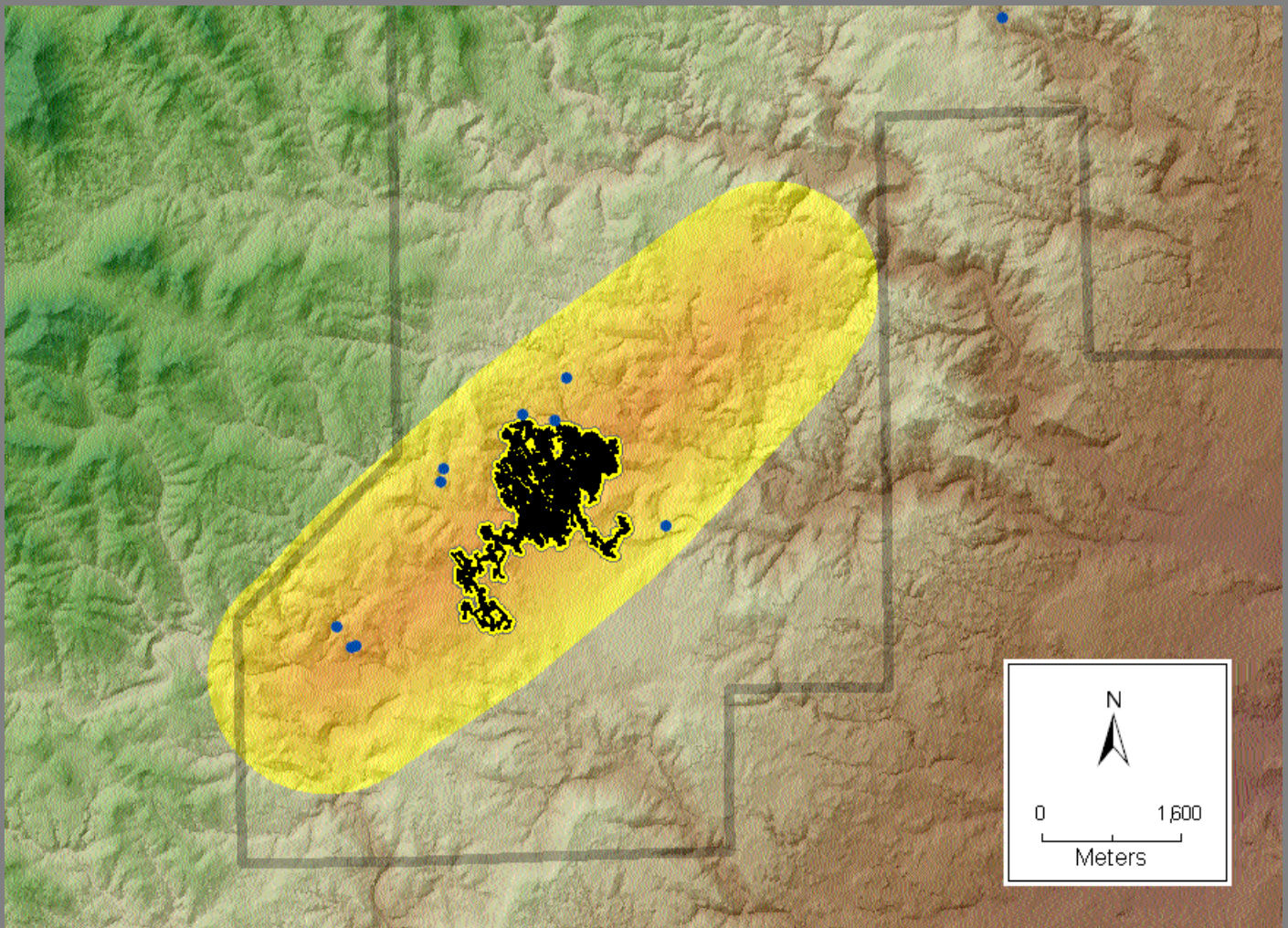


# JOURNAL OF CAVE AND KARST STUDIES

---

---

April 2002  
Volume 64 Number 1  
ISSN 1090-6924  
A Publication of the National  
Speleological Society



## CAVE AND KARST GIS SPECIAL ISSUE

# Journal of Cave and Karst Studies of the National Speleological Society

Volume 64 Number 1 April 2002

## CONTENTS

Introduction to cave and karst GIS <i>Bernard W. Szukalski</i>	3
Using GIS to manage two large cave systems, Wind and Jewel Caves, South Dakota <i>Rene Ohms and Matthew Reece</i>	4
The use of GIS in the spatial analysis of an archaeological cave site <i>Holley Moyes</i>	9
GIS applied to bioarchaeology: An example from the Río Talgua Caves in northeast Honduras <i>Nicholas Herrmann</i>	17
Remote sensing and GIS-based analysis of cave development in the Suoimuoi Catchment (Son La - NW Vietnam) <i>L. Q. Hung, N.Q. Dinh, O. Batelaan, V. T. Tam, and D. Lagrou</i>	23
Implementation and application of GIS at Timpanogos Cave National Monument, Utah <i>B.E. McNeil, J.D. Jasper, D.A. Luchsinger, and M.V. Rainsmier</i>	34
The application of GIS in support of land acquisition for the protection of sensitive groundwater recharge properties in the Edwards Aquifer of south-central Texas <i>Dan Stone and Geary M. Schindel</i>	38
Revising the karst map of the United States <i>George Veni</i>	45
The development of a karst feature database for southeastern Minnesota <i>Yongli Gao, E. Calvin Alexander, Jr., and Robert G. Tipping</i>	51
Karst GIS advances in Kentucky <i>Lee J. Florea and Randall L. Paylor, Larry Simpson, and Jason Gulley</i>	58
Using geographic information systems to develop a cave potential map for Wind Cave, South Dakota <i>Rodney D. Horrocks and Bernard W. Szukalski</i>	63
Hurricane Crawl Cave: A GIS-based cave management plan analysis and review <i>Joel Despain and Shane Fryer</i>	71
Public datasets integrated with GIS and 3-D visualization help expand subsurface conceptual model <i>Terri L. Phelan</i>	77
An examination of perennial stream drainage patterns within the Mammoth Cave watershed, Kentucky <i>Alan Glennon and Chris Groves</i>	82
<b>Cave Science News</b>	93

The *Journal of Cave and Karst Studies* (ISSN 1090-6924) is a multi-disciplinary, refereed journal published three times a year by the National Speleological Society, 2813 Cave Avenue, Huntsville, Alabama 35810-4431 USA; (256) 852-1300; FAX (256) 851-9241, e-mail: [nss@caves.org](mailto:nss@caves.org); World Wide Web: <http://www.caves.org/~nss/>. The annual subscription fee, worldwide, by surface mail, is \$18 US. Airmail delivery outside the United States of both the *NSS News* and the *Journal of Cave and Karst Studies* is available for an additional fee of \$40 (total \$58); The *Journal of Cave and Karst Studies* is not available alone by airmail. Back issues and cumulative indices are available from the NSS office. POSTMASTER: send address changes to the *Journal of Cave and Karst Studies*, 2813 Cave Avenue, Huntsville, Alabama 35810-4431 USA.

Copyright © 2002 by the National Speleological Society, Inc. Printed on recycled paper by American Web, 4040 Dahlia Street, Denver, Colorado 80216 USA

Front cover: Cave potential map, Wind Cave, South Dakota. See Horrocks and Szukalski, p. 63.

Back cover: Geologic cross-section of the Edwards Aquifer, Texas. See Stone and Schindel, p. 38.

## Editor

**Louise D. Hose**

Department of Physical Sciences  
Chapman University  
Orange, CA 92866  
(714) 997-6994 Voice  
(714) 532-6048 FAX  
[hose@chapman.edu](mailto:hose@chapman.edu)

## Production Editor

**James A. Pisarowicz**

Wind Cave National Park  
Hot Springs, SD 57747  
(605) 673-5582  
[pisarowi@gwtc.net](mailto:pisarowi@gwtc.net)

## BOARD OF EDITORS

### Anthropology

**Patty Jo Watson**

Department of Anthropology  
Washington University  
St. Louis, MO 63130  
[pjwatson@artsci.wustl.edu](mailto:pjwatson@artsci.wustl.edu)

### Conservation

Julian J. Lewis

J. Lewis & Associates, Biological Consulting  
217 West Carter Avenue  
Clarksville, IN 47129  
(812) 283-6120  
[lewisbioconsult@aol.com](mailto:lewisbioconsult@aol.com)

## Earth Sciences-Journal Index

**Ira D. Sasowsky**

Department of Geology  
University of Akron  
Akron, OH 44325-4101  
(330) 972-5389  
[ids@uakron.edu](mailto:ids@uakron.edu)

### Exploration

**Andrea Futrell**

987 Dow Creek Road  
Pembroke, VA 24136  
(540) 626-5349  
[karstmap@hotmail.com](mailto:karstmap@hotmail.com)

### Life Sciences

**Steve Taylor**

Center for Biodiversity  
Illinois Natural History Survey  
607 East Peabody Drive (MC-652)  
Champaign, IL 61820-6970  
(217) 333-5702  
[staylor@inhs.uiuc.edu](mailto:staylor@inhs.uiuc.edu)

### Social Sciences

**Marion O. Smith**

P.O. Box 8276  
University of Tennessee Station  
Knoxville, TN 37996

### Book Reviews

**Ernst H. Kastning**

P.O. Box 1048  
Radford, VA 24141-0048  
[ehkastni@runet.edu](mailto:ehkastni@runet.edu)

### Proofreader

**Donald G. Davis**

## JOURNAL ADVISORY BOARD

David Ashley	Rane Curl
Malcolm Field	Andrew Flurkey
John Ganter	Donald MacFarlane
Diana Northup	Art Palmer
William White	