

ILLINOIS SPELEOLOGICAL SURVEY

Past, Present and Future

Presented at the *Cooperative Projects between
Cavers, State Surveys, Agencies and NGOs*
roundtable, 2015 NSS Convention

Bob Weck,
ISS President
Bob.weck@swic.edu

INCORPORATED JULY 14, 1995



Logo by Brian R. Braye

Original Directors:
Philip Moss
Joel Laws
Joan Bade
Jim Sherrell

PURPOSES

- Protect, conserve, locate, record, explore and study caves and karst resources in the State of Illinois
- Provide a permanent, non-profit, non-sectarian, cooperative organization for the pursuit of speleology
- Establish and nurture a professional atmosphere among Illinois' speleologists
- Cooperate with all individuals and organizations consistent with the forgoing purposes

1ST ISS GENERAL MEETING

4 NOVEMBER 1995

- Dr. Donald Webb - Illinois Natural History Survey
- Eric Liebhaber - Recording Secretary
- Dr. Russell Graham - Illinois State Museum
- Jim Sherrell - Meramec Valley Grotto
- Philip Moss - President and proxy for the Mississippi Karst Resource Planning Committee
- Joel Laws - Vice-President
- Dave Anderson - Windy City Grotto
- Kevin Berdack - Stygian Grotto
- Dave Mahon - Mark Twain Grotto
- John Marquart - Near-Normal Grotto
- Darrol Gasawski - Mid-Mississippi Valley Grotto

ISS IS A PROJECT OF THE NSS CAVES.ORG/PROJECT/ISS

JACK WOOD, WEBMASTER

Illinois Speleological Survey, Inc. A Project of the National Speleological Society

White Nose Syndrome

The ISS encourages all cavers within the state of Illinois to abide by and support cave access restrictions and closures put in place to slow the spread of White Nose Syndrome (WNS).

The ISS encourages all cavers to follow the best available decontamination procedures between all cave trips.

Information on WNS can be found [here](#).



Logo by Brian R. Braye

Organization Information

- [Members and meeting minutes \(Updated Mar 2015\)](#)
- [The constitution and bylaws](#)
- [Official Acts of the Board](#)
- [Officers, Committees, Affiliates, & Directors](#)
- [Membership Information](#)

News Letter

- [Issue 1 - January 2014](#)

Projects and Events

- [Calendar of events \(past and future\)](#)
- [Caving in Illinois and points beyond](#)
- [ISS-SNE Karst Project information](#)

Science

- [Cave database information \(Updated Jan 2015\)](#)
 - [Data requests](#)
- [Cave and karst science resources](#)
- [Funding and internship opportunities](#)

The Illinois Speleological Survey is a private, nonprofit organization dedicated to protecting, conserving, locating, recording, exploring and studying caves and karst in Illinois.

ISS Patch

ISS is offering a patch with an all color logo for \$5 plus shipping.
Please contact Richard Raber at erraber@effingham.net to order

BUILDING THE ILLINOIS CAVE DATABASE IS AN ONGOING PROJECT

ISS Cave Database - [ISS Database 04Sept2010]

File Edit View Insert Format Records Scripts Window Help

Browse

Layout: Intro

Record: 6

Total: 6

Unsorted

ILLINOIS CAVE DATABASE

Working Version

THE INFORMATION IN THIS FILE IS THE PROPERTY OF THE ILLINOIS SPELEOLOGICAL SURVEY AND MAY NOT BE RELEASED WITHOUT WRITTEN AUTHORIZATION.

Last Modified
10/3/2010

INDEX INSTRUCTIONS

ILLINOIS SPELEOLOGICAL SURVEY
FOUNDED 1995

This database is written in FileMaker Pro 8.5.
For support, contact:
Scott House 573-651-3782 <scott_house@semo.net>.

100 Browse

For Help, press F1

Start Paint Shop Pro ISS Cave Database ISS Cave Database - ... 8:23 PM

CURRENT ISS GOVERNANCE

(MAY 2015)

- Bob Weck, President
- Tony Schmitt, Vice President and Director
- Aaron Addison, Director
- Mona Colburn, Director and Data Custodian
- Carl Daubach, Director
- Dan Lamping, Director
- Gary Resch, Director
- Steve Taylor, Director
- John Lovaas, Treasurer and Registered Agent
- Jack Wood, Webmaster

A FEW MAJOR ISS PROJECTS

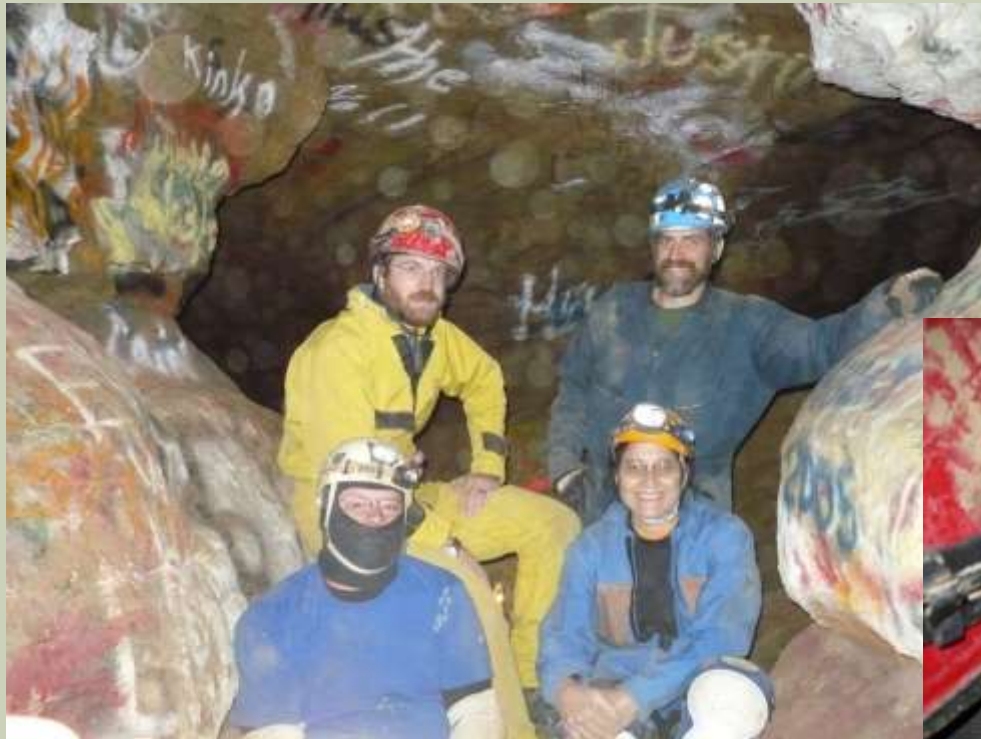
- Sinkhole Cleanups
- Ridgewalking and cave surveys in Shawnee National Forest
- Ridgewalking and cave surveys in Columbia/Stemler Karst
- Resurvey of Stemler Cave

SINKHOLE CLEANUPS



Photos by Steve Taylor
and Bob Weck

SHAWNEE NATIONAL FOREST, EQUALITY CAVE



Photos by John Lovaas, Tony Schmitt
And Philip Moss

Equality Cave

Saline County, Illinois

WORKING DRAFT

Re-survey conducted by the Illinois Speleological Survey

Plan view, selected cross sections,

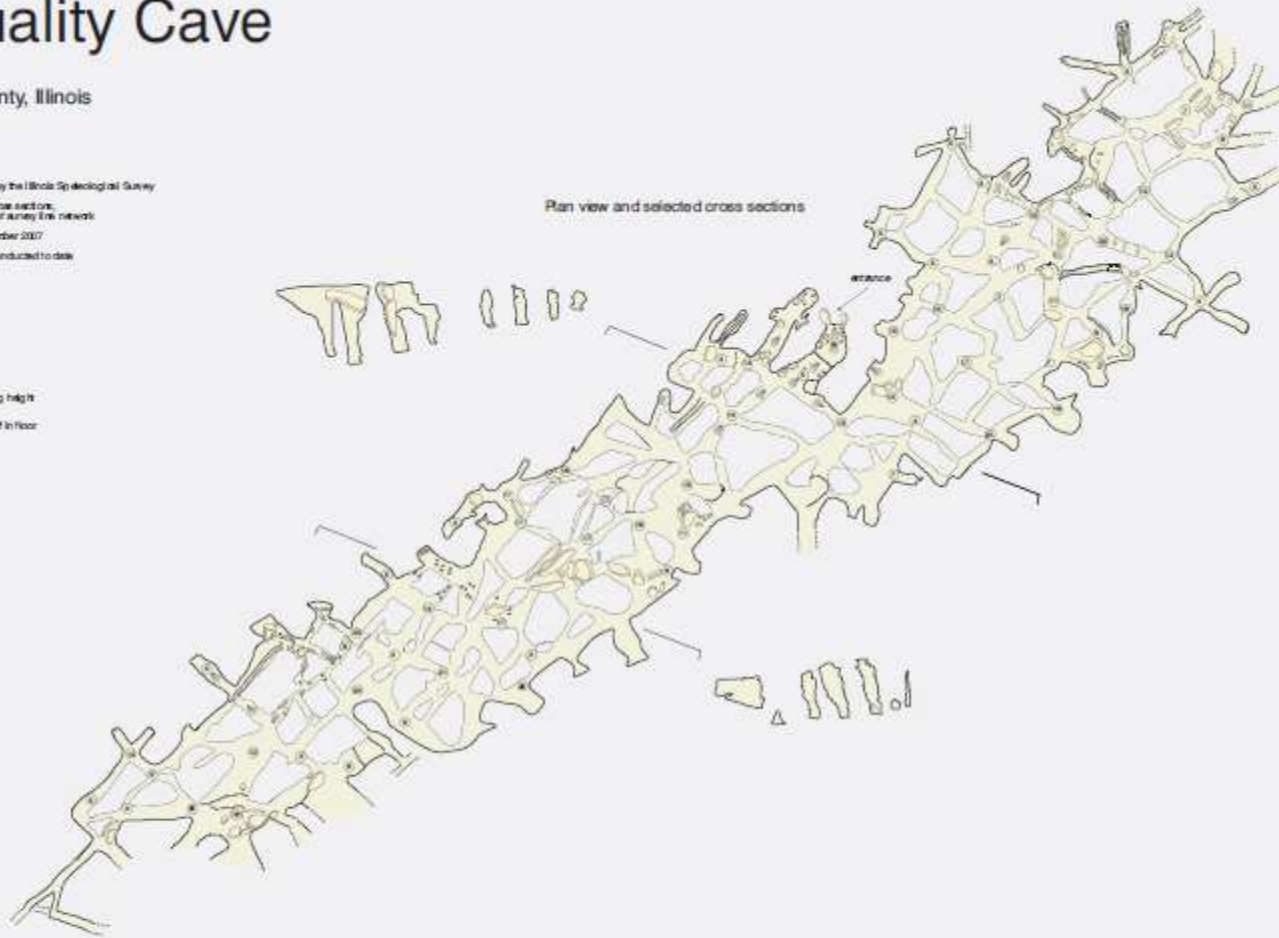
and projected profile of survey line network

data current to September 2007

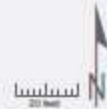
4,473 feet of survey conducted to date

-  breakdown
-  pillar
-  arch
-  change in ceiling height
-  ledge or dip of floor
-  ceiling height
-  flowstone

Plan view and selected cross sections



Projected profile view of survey line network



ZIGZAG SALAMANDERS IN EQUALITY CAVE



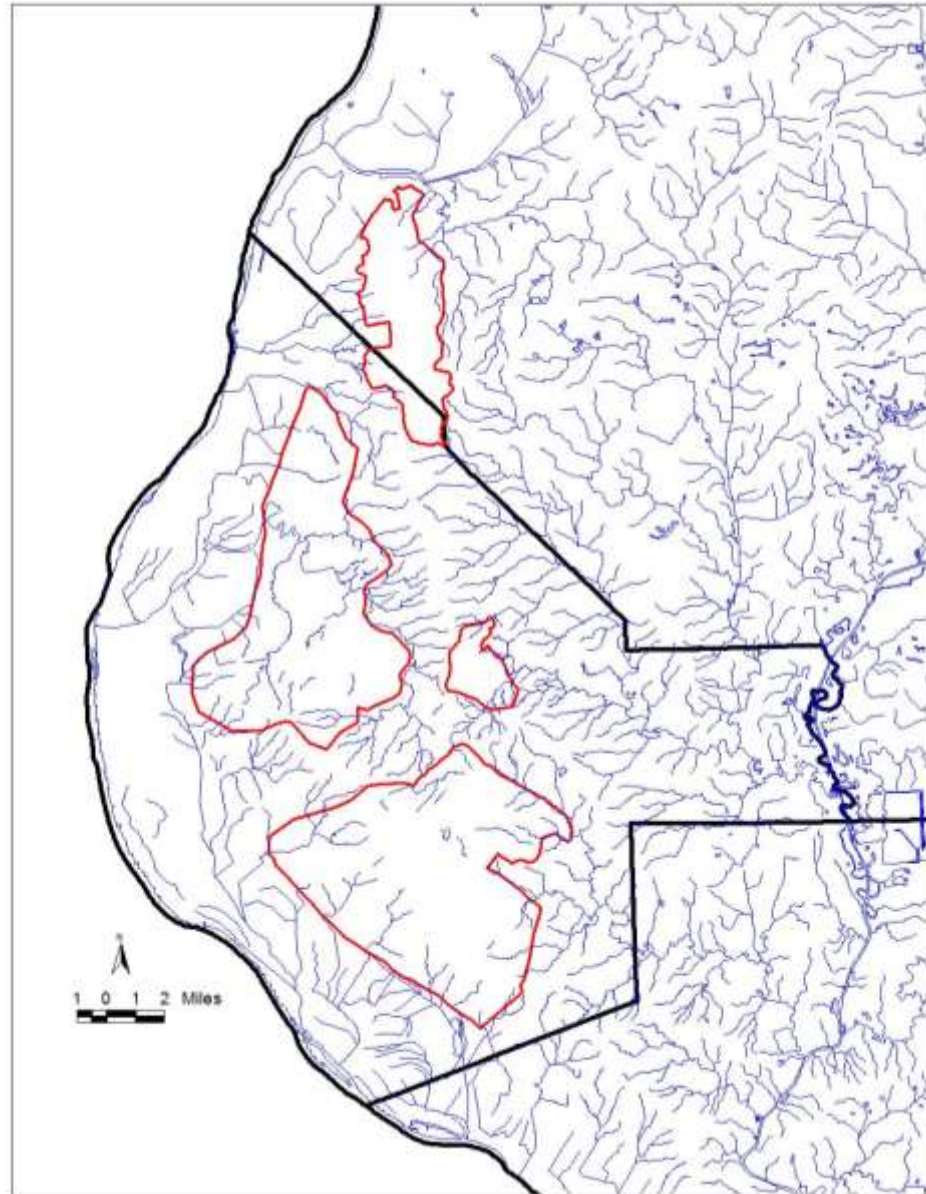
SOUTHWESTERN ILLINOIS KARST



Photo by Frank Wilhelm

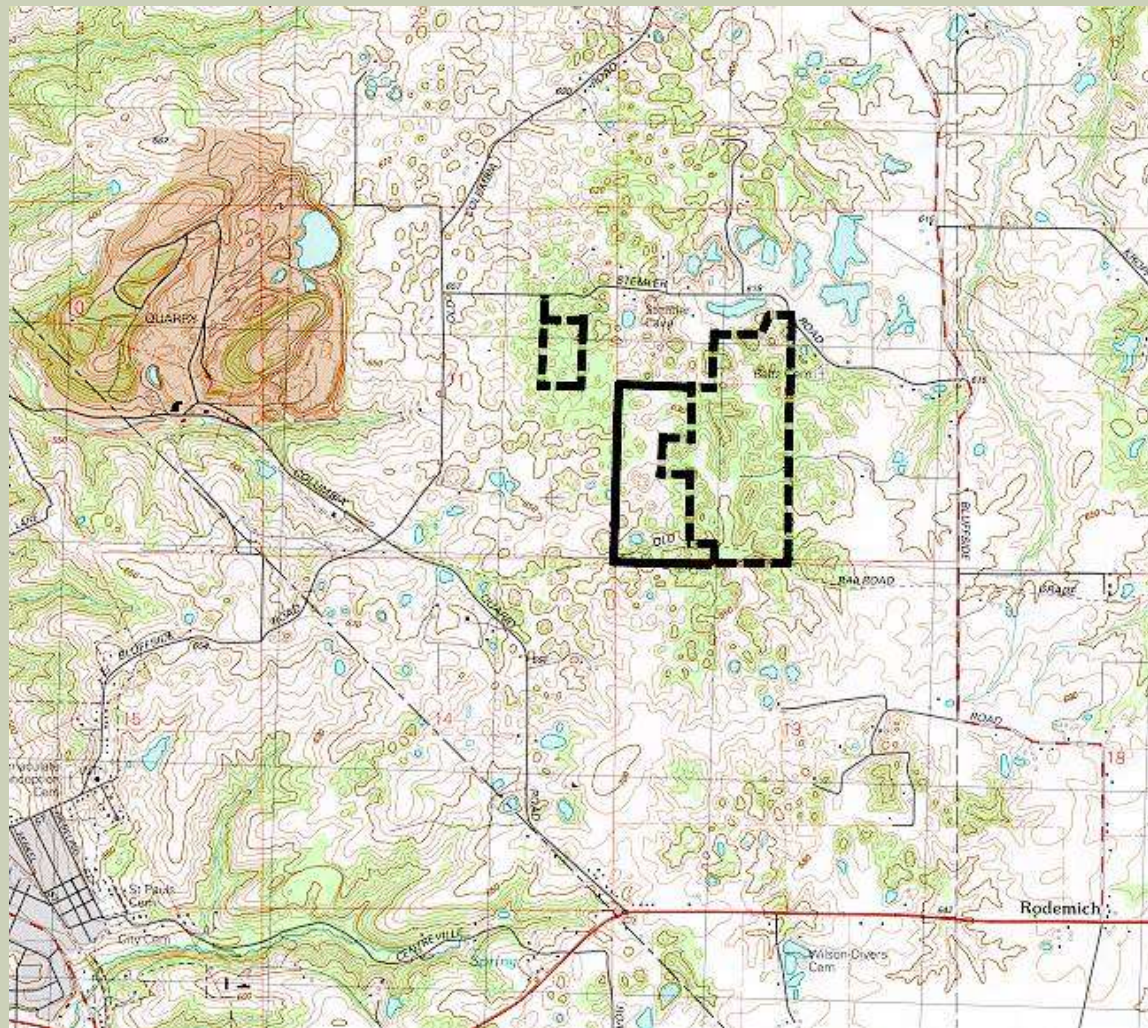


Photo by Derik Holtmann



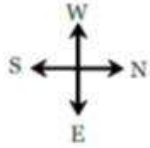
Map by Philip Moss

STEMLER CAVE WOODS NATURE PRESERVE, IDNR



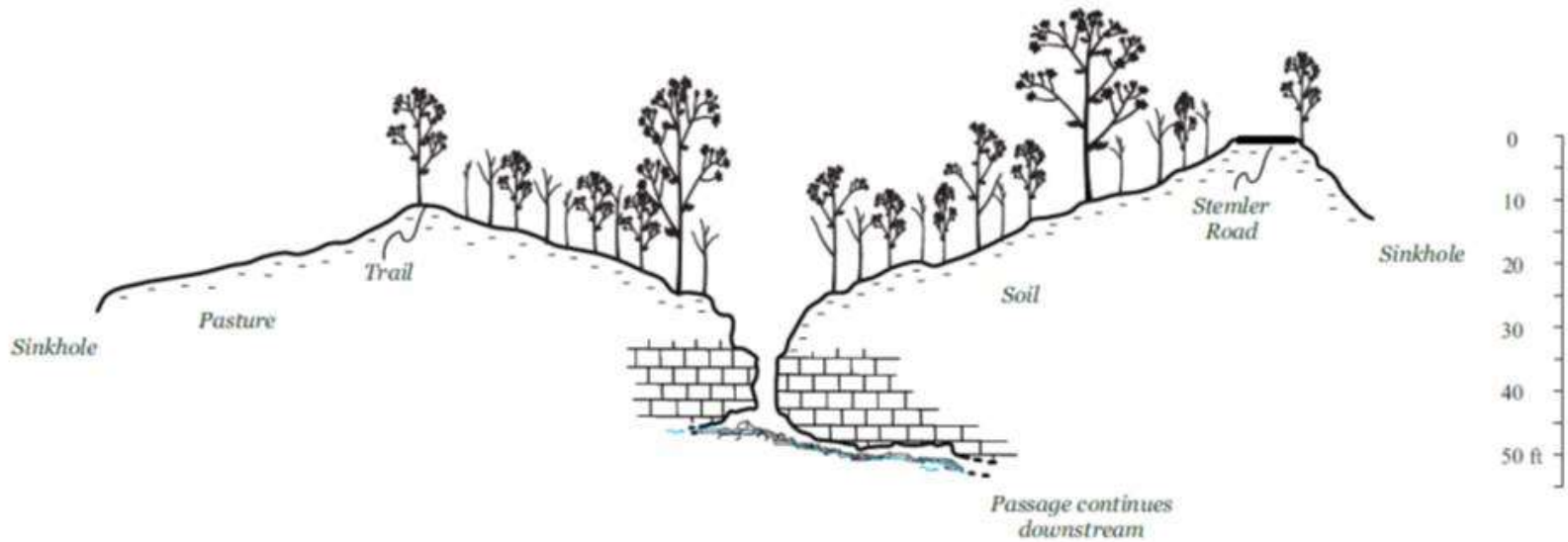
STEMLER CAVE PROJECT

- Dan Lamping and Aaron Addison(cartographer)
- 8,700 ft to date
- Two endangered and several rare species
- Supports ongoing cavesnail, biological research



Stemler Cave

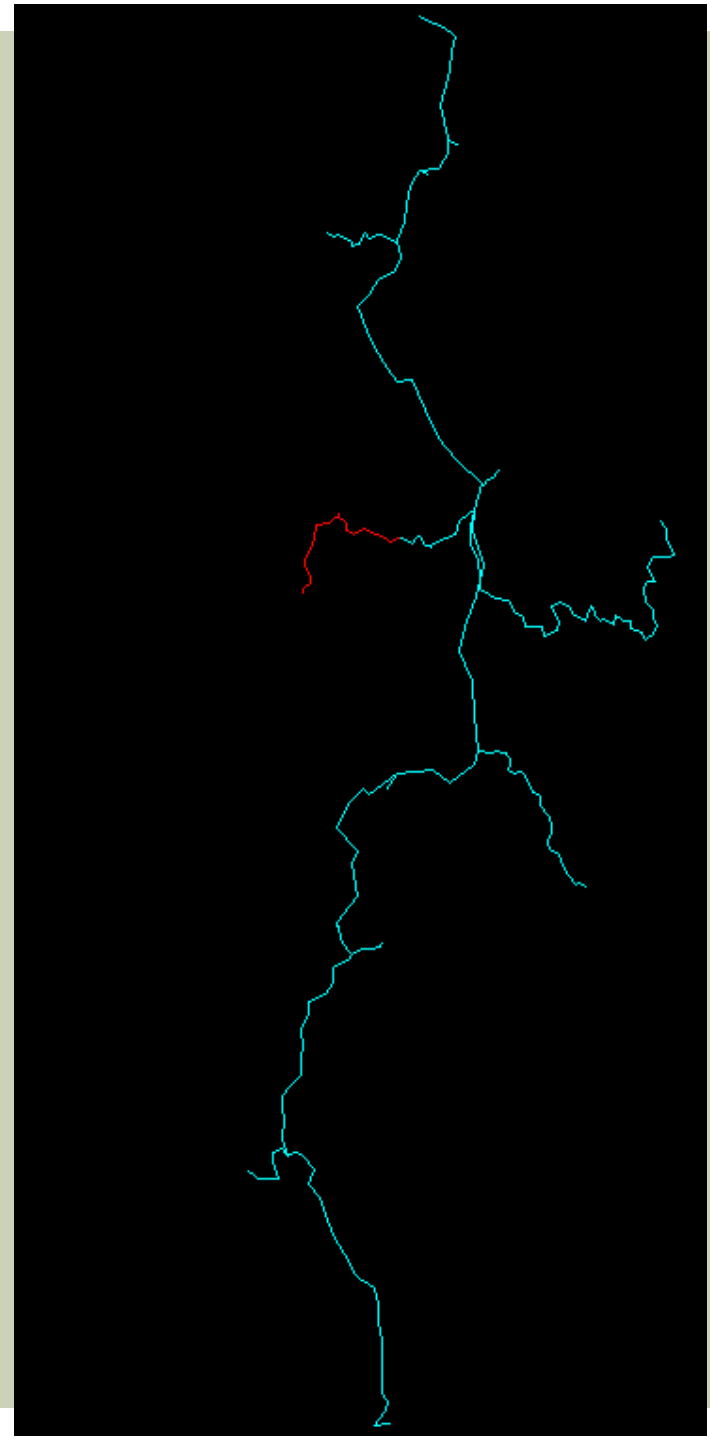
St. Clair County, Illinois
Stemler Cave Nature Preserve



Entrance cross section drawn facing west
using a compass, clinometer and fiberglass tape survey

Surveyed by Derik Holtmann, Dan Lamping and Joe Sikorski
of the Illinois Speleological Survey on April 5, 2014

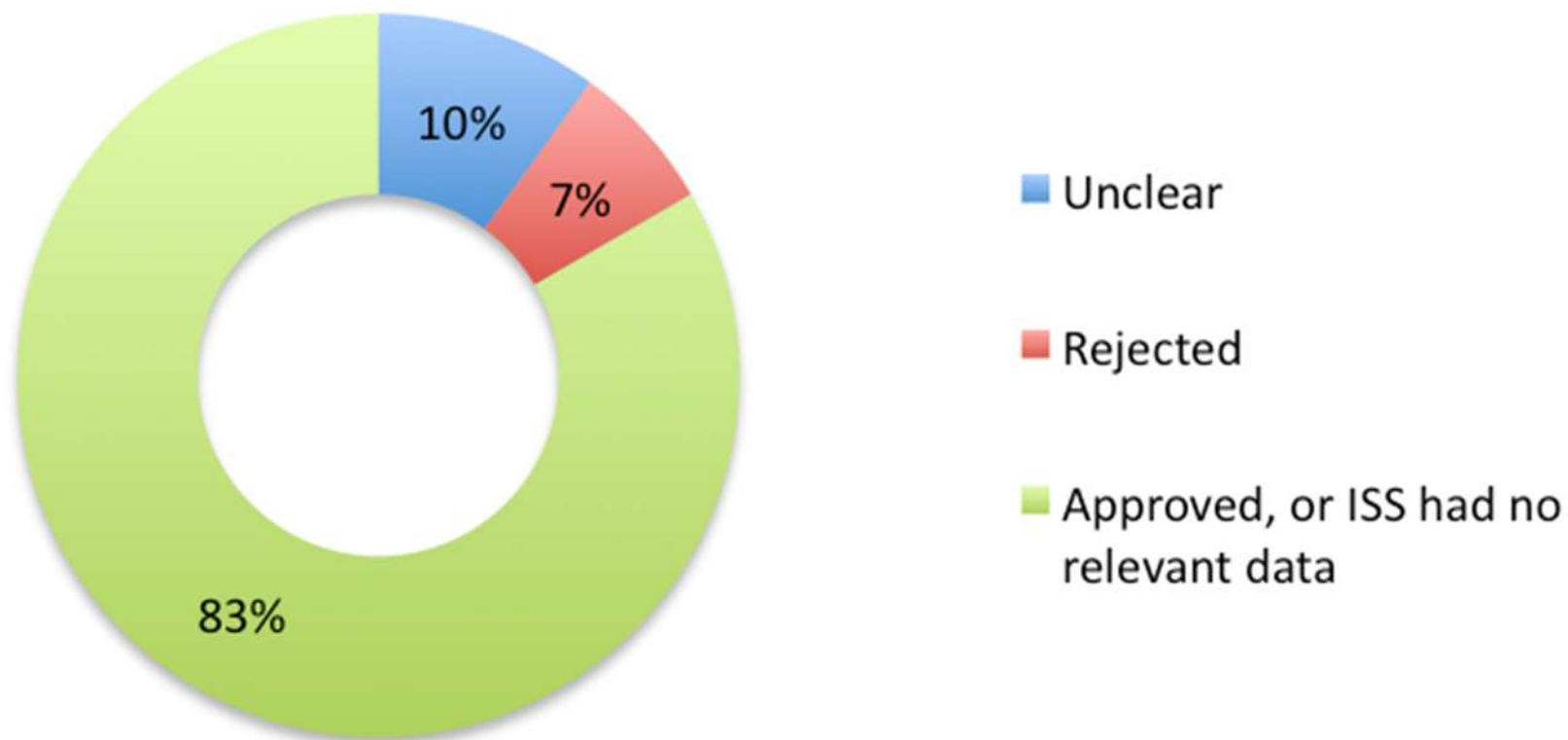
Drawn by Dan Lamping 2014



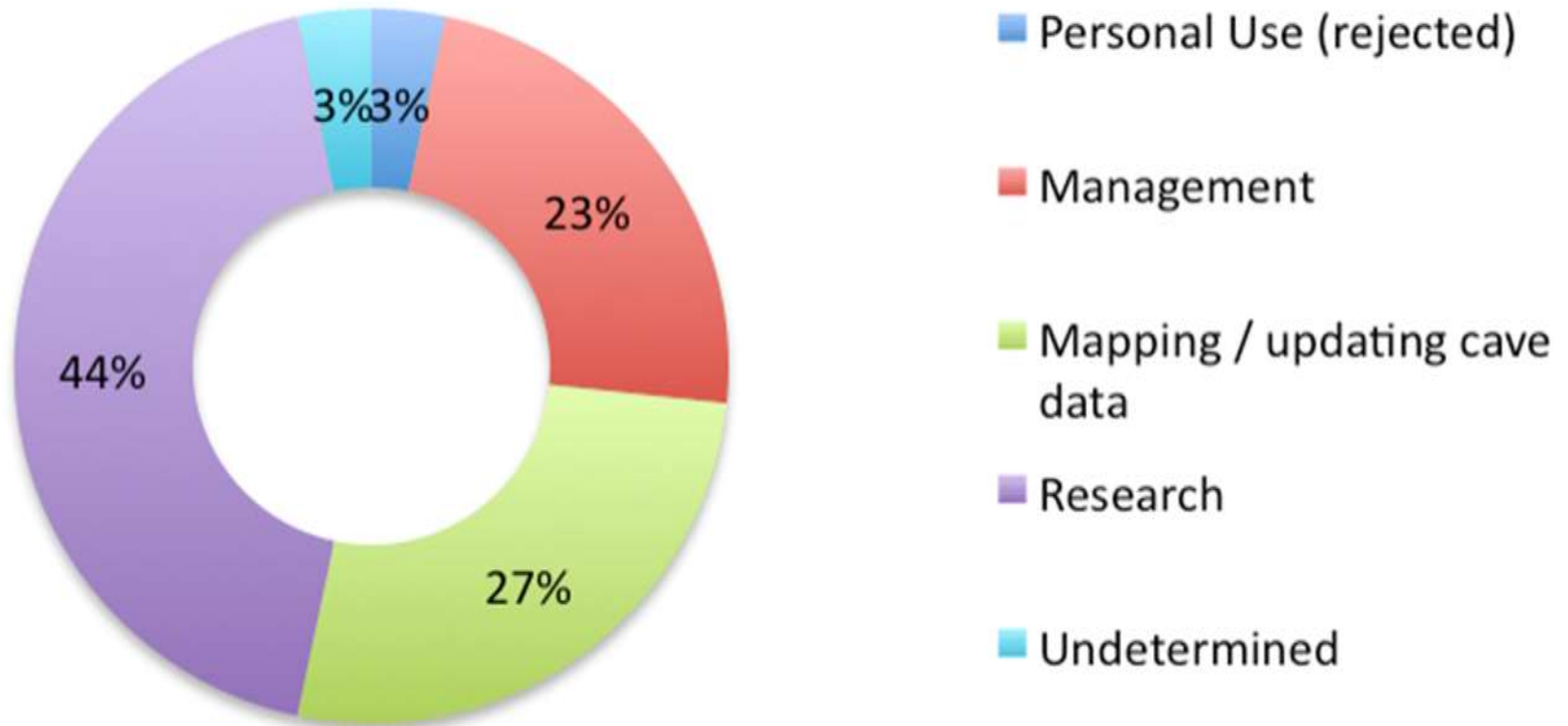
CHALLENGES TO ISS

- Overly cumbersome constitution, bylaws, data request process
- Relationship with US Forest Service in Shawnee National Forest
- WNS in Illinois
- Illinois' poor financial condition; lack of funding and staffing for Illinois Department of Natural Resources
- Disinterest by caving community due to personality conflicts, perceptions about data access

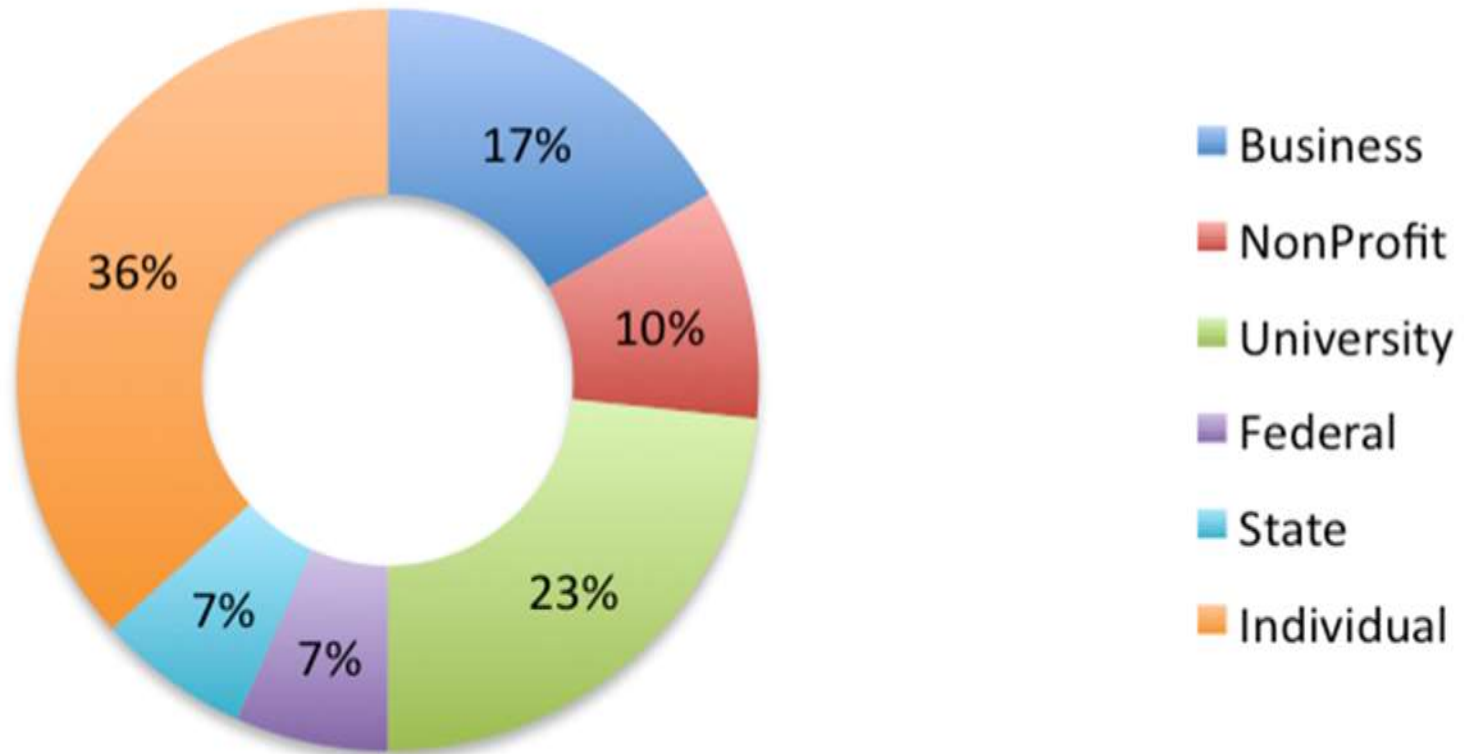
1998-2009 ISS Data Requests



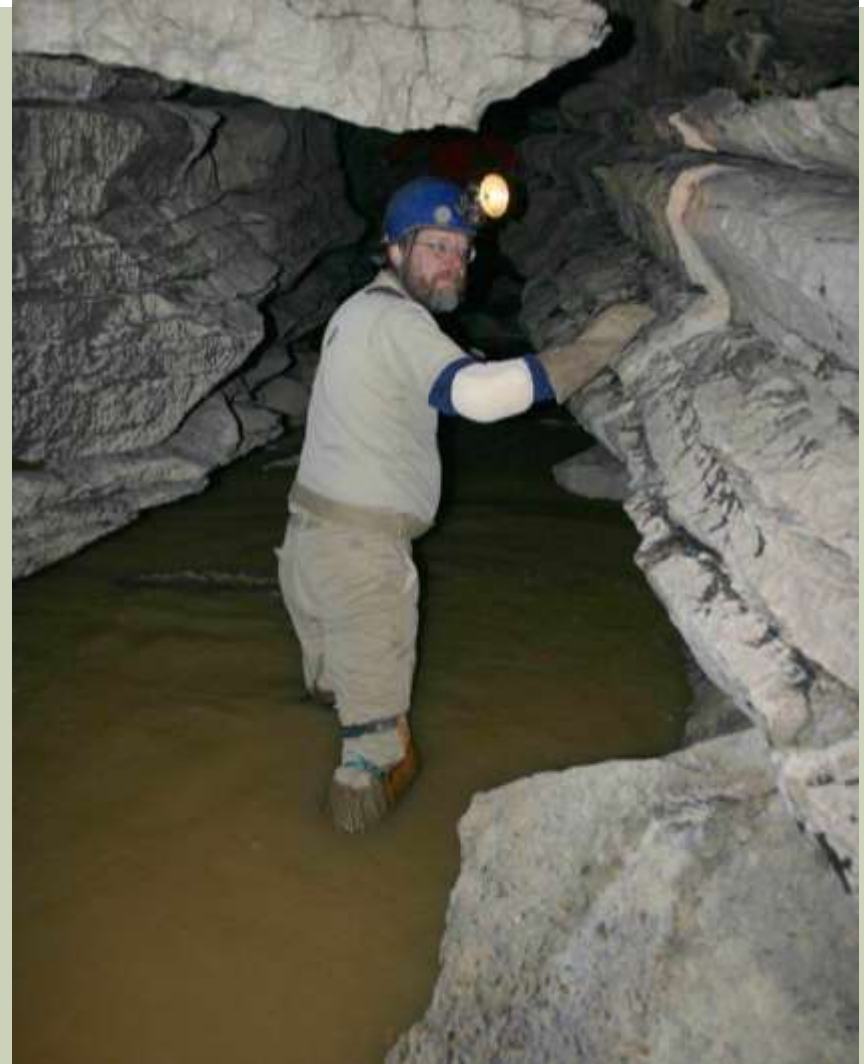
1998-2009 ISS Data Requests



1998-2009 ISS Data Requests



PHILIP MOSS ISS FOUNDER, NSS FELLOW



PHILIP'S CONTRIBUTION TO ILLINOIS SPELEOLOGY

- Walked over 10,000 acres in Illinois looking for caves.
- Discovered and submitted locations of approximately 345 Illinois karst features.
- Drafted and submitted to the ISS cave database 28 Illinois cave maps, documenting over 11 miles of cave passage.
- Submitted to ISS about 38 miles of georeferenced cave passage line plots.
- Completed 148 dye traces in Illinois.
- Delineated 21 cave or spring recharge areas in Illinois.
- Authored or coauthored numerous reports of karst investigations, including five that are posted on the ISS website.
- Found significant range extensions of 20 cave species, discovered two species new to science, and found four new populations of the endangered Illinois cave amphipod

EFFORTS TO REFORM ISS

- Adoption of FileMaker database framework provided by Scott House, MSS
- Structural changes to the ISS Constitution and Bylaws
- Transition from paid “members” to “cooperators”
- Encourage data submission from disaffected cavers
- Pursue new cooperative opportunities and Develop MOU with Forest Service to allow resumption of Equality Cave Project

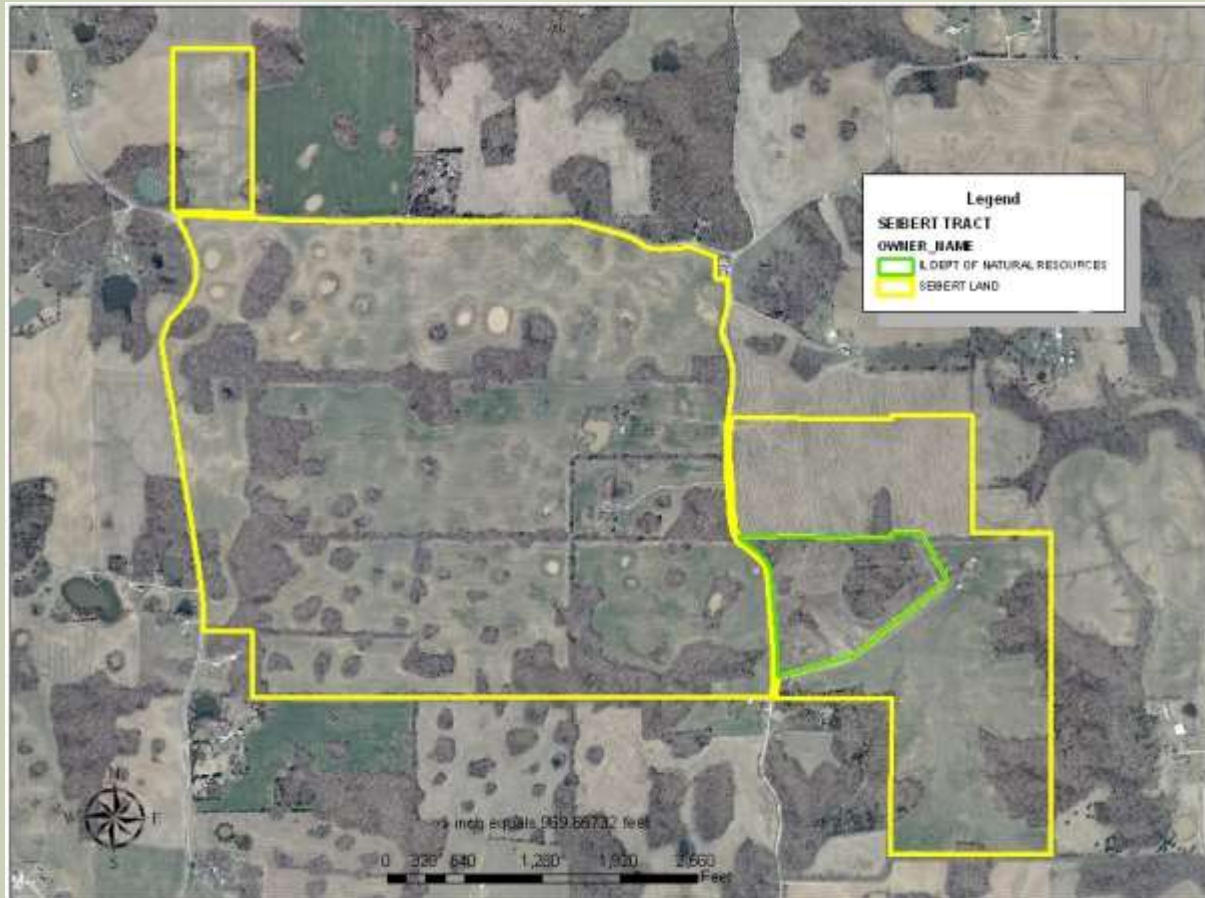
CURRENT AND FUTURE PROJECTS

- Cooperation with CLIFFTOP NFP on SW Illinois karst and cave protection and research
- Cooperation with National Great Rivers Research and Education Center on karst and cave projects
- Cooperation with Illinois Department of Natural Resources
- Cooperation with Karst Conservancy of Illinois

COOPERATION WITH CLIFFFTOP NFP

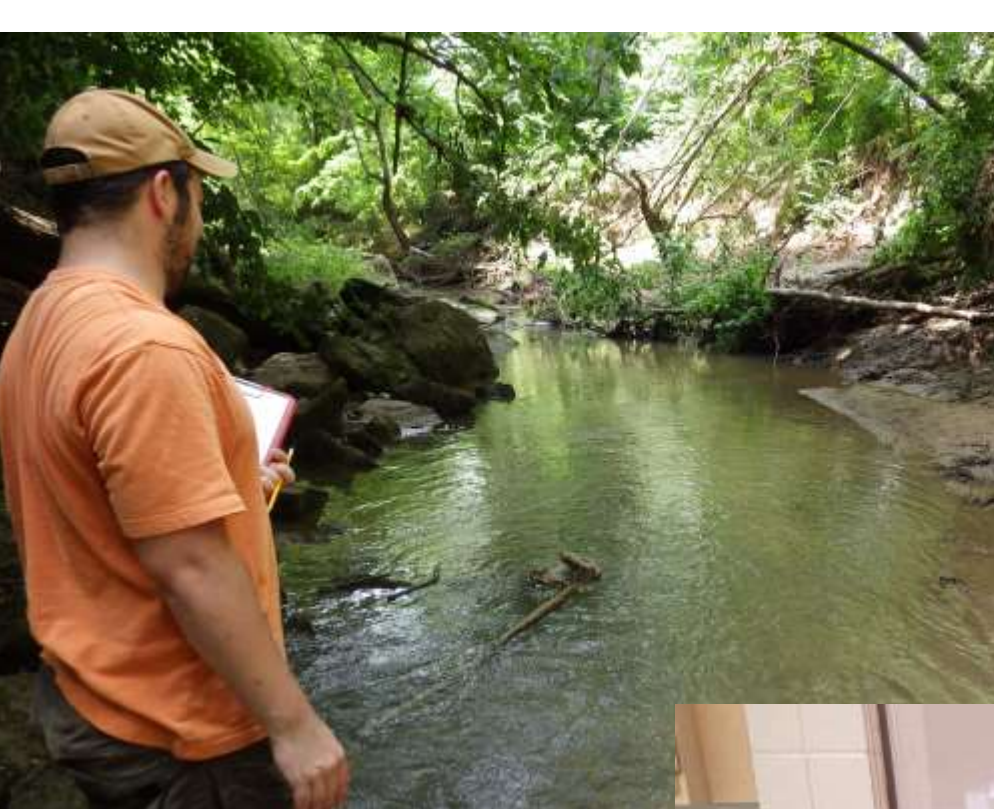
PAUL WIGHTMAN SUBTERRANEAN NATURE PRESERVE

FOGELPOLE CAVE

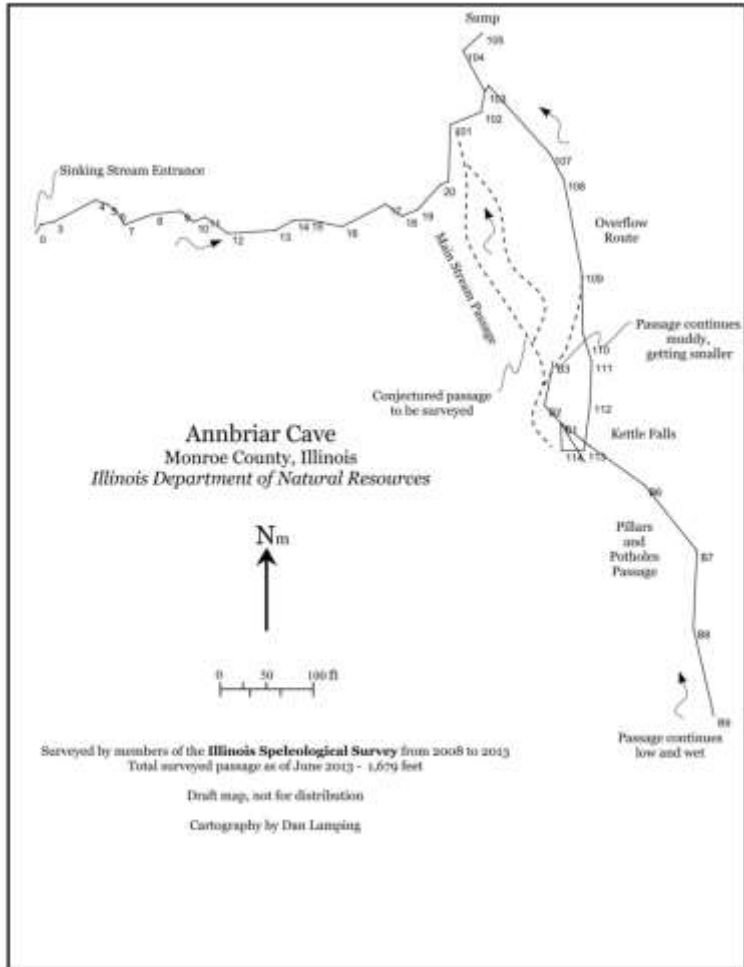


NATIONAL GREAT RIVERS RESEARCH AND EDUCATION CENTER

- 2010 “Best Management Practices for Maintaining Sinkhole Ponds as Amphibian Habitat”
- 2012 “Distribution and Population Density of the Enigmatic Cavesnail (*Fontigens antroecetes*) in Stemler Cave”
- 2013 “Macroinvertebrate Communities and Water Quality in Sparrow Spring and Sparrow Creek”
- 2014 “Fecundity and Growth Rates of *Physa acuta* from Stemler Cave”



SURVEY OF ANNBRIAR CAVE FOR ILLINOIS DEPARTMENT OF NATURAL RESOURCES



- Dan Lamping, Cartographer
- 1,697 ft surveyed
- Habitat for Federally Endangered Illinois Cave Amphipod

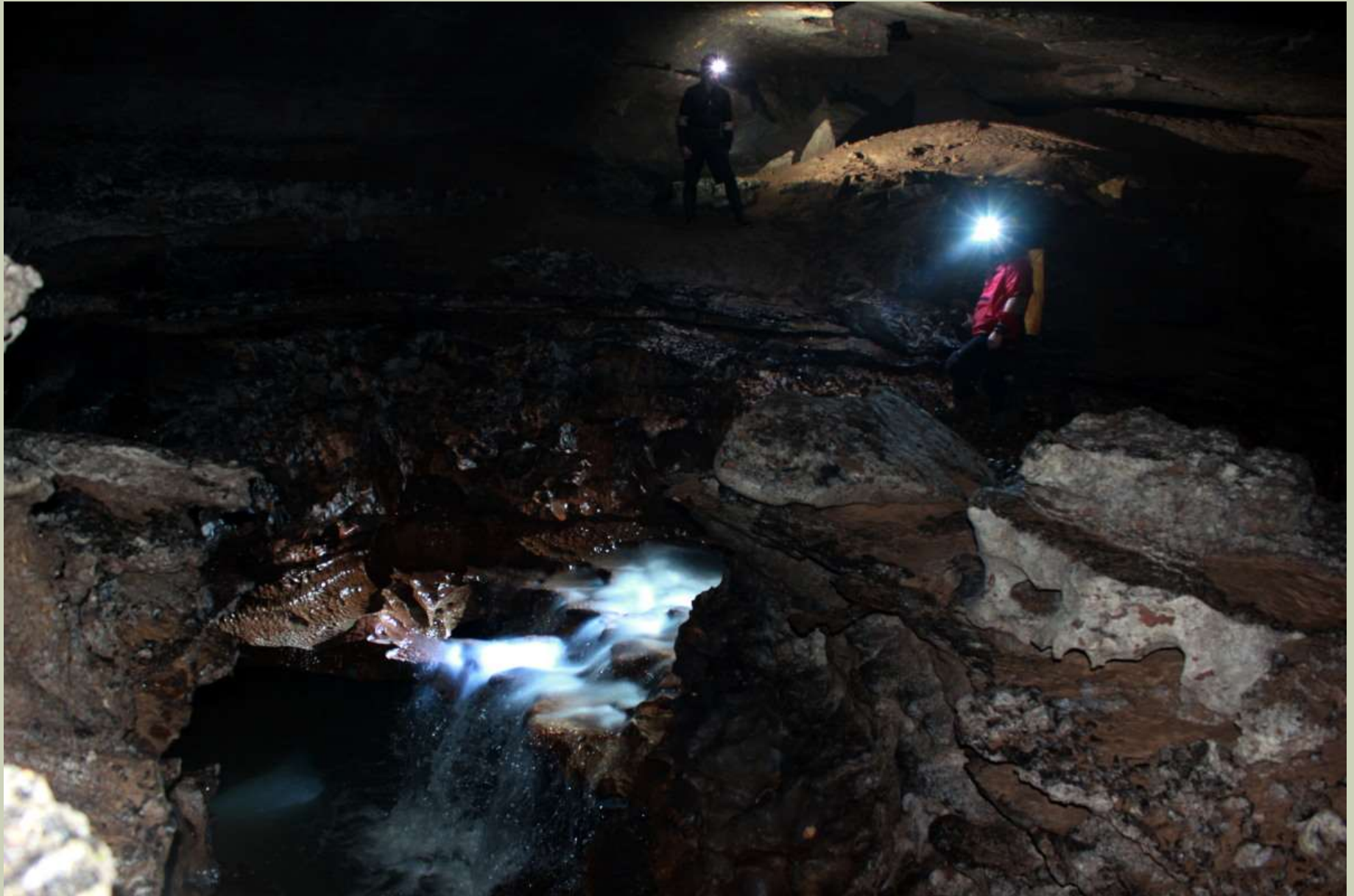
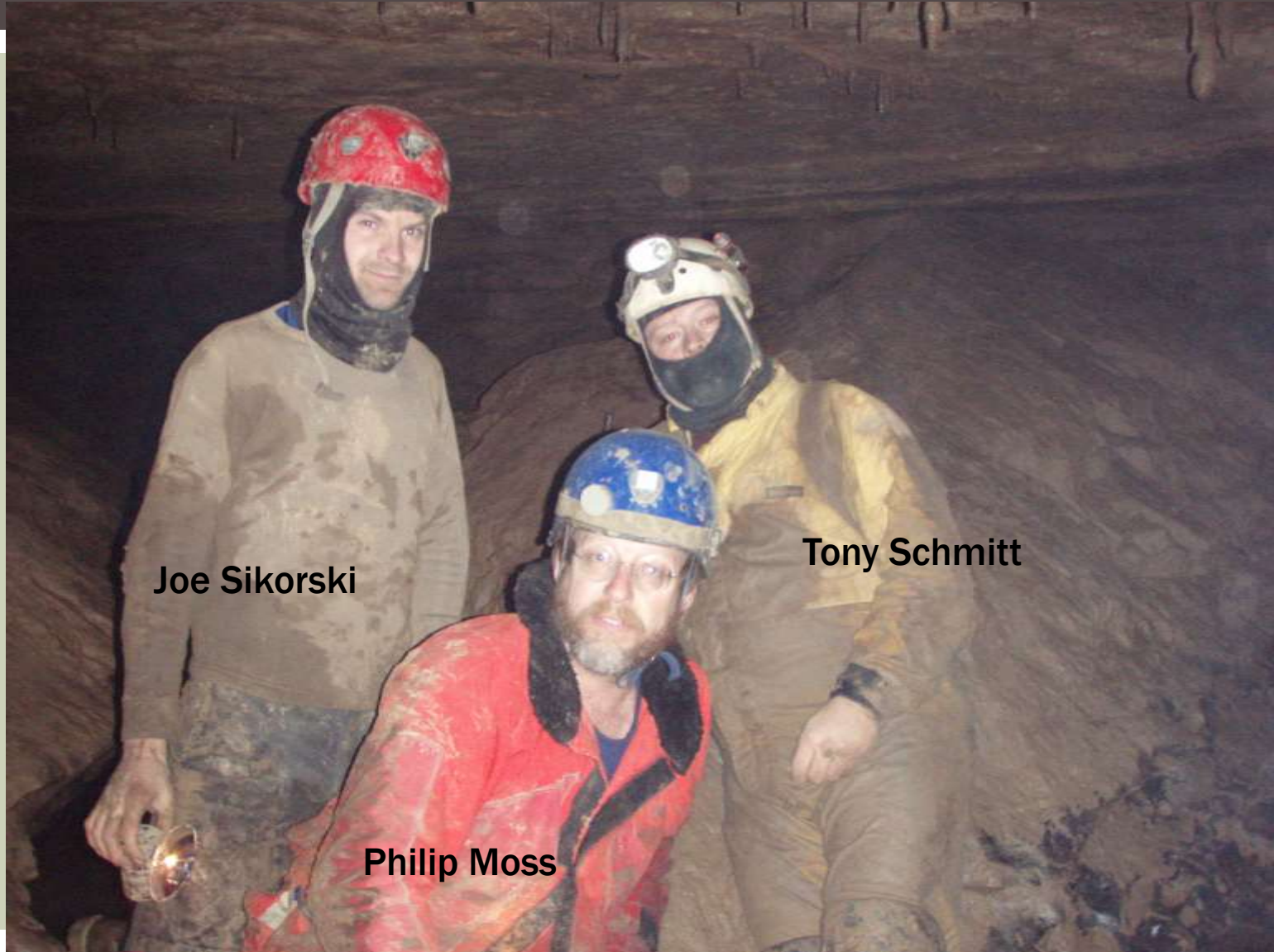


Photo by Dan Lamping

COOPERATION WITH KCI - PAUTLER CAVE



Joe Sikorski

Tony Schmitt

Philip Moss

THANKS TO:

- ISS Directors and Cooperators
- Photos and images by Aaron Addison, Philip Moss, Dan Lamping, John Lovaas, Derik Holtmann, Tony Schmitt, Steve Taylor, Frank Wilhelm.