

NSS National Headquarters Commission Status Report February 28, 2011

The headquarters commission comprises: Chairman John Scheltens; Dave Luckins, secretary; Tom Rea, treasurer; Steve Ormeroid; Bert Ashbrook; and OVP Wm Shrewsbury, *ex officio*.

The Commission continues to evaluate potential sites for the new office. Several site investigation trips have been conducted since the last Board meeting, these include multiple visits to Huntsville, Alabama: Mammoth Cave, Kentucky: and a single trip to the Shenandoah Valley of Virginia: and a single trip to Chattanooga, Tennessee. The Commission met February 4-6, 2011 in Goodlettsville, Tennessee .

The meeting in Tennessee was to narrow down the many sites being investigated. A decision matrix was adopted to help in the decision making process. This matrix incorporates 9 categories and 71 items to be evaluated for each site. Each item is scored and ranked within a category for effectiveness as well as relative importance. Then each category is ranked for overall relative importance giving more weight to some areas and less to others. It is not an exact science but helps the Commission (and the Board) to understand the many elements in the decision making process.

The matrix divides elements into categories and items as follows:

<u>Category</u>	<u>Item</u>
Efficient operation of the Office	Banking UPS/FedEx UPS/Fedex Customer Service Center Office Supply Capability Printers/publication Post Office, Full Service Clerical Labor Pool Police Security companies Quality of Life of the Town Median Income Educational Level Community Growth History Grotto Support Local Grotto Non-Caver (temporary labor) High Speed Internet Access Telephone Lines # Parking spaces

Delivery of Member Services	Cave Access Freight entrance Office Space Book Store Space Conference Room Space
Low Ongoing Maintenance Cost	Sewer Cost Heating/Cooling Units Moving Costs Property Taxes Electricity Age of Building Gas Water Fire Department Age of Parking
Ability to Work with Outside Groups	Cooperative Associations Major University Government Relations
Membership Support for Office Project	Cave on Property Caver Curb Appeal Neighborhood nature Neighborhood quality Effect on Fundraising
Ease of Travel to or Staying at the Office For Business	Accessible Caves within 25 mile radius Airport Freeway Roads Gas Stations Restaurants and Hotels Major Population Center Nearest Business Neighbors Distance from Caver Population
Public Outreach	Feet Thru The Door (FTTD) Potential FTTD w/Cave Interest Public Curb Appeal Public Area Local Newspaper Local Radio/TV Station
Library/Museum	Support Speleology Library Space Fire Suppression System Professional Librarian University support for library Secure storage/safe
Extraordinary Items	Exhibit potential Hall for Rental Grounds for Rental Caver Camping Caver Regional Events Convention Site NCKMS Site or similar events
	Investment potential

In the past couple of months six sites have risen for serious consideration and evaluation. All of these sites being considered have willing sellers and the Commission has obtained their asking prices. Some properties were on the market for sale, others we sought out the owners for possible sales. One site was found by local community leaders wanting us to relocate there. Regardless all of these sites are available at present. However, given the probable time it will take both the HQ Commission to make a final recommendation and the Board voting on the final site, the Commission has taken actions to secure some of the most vulnerable sites for sale till July. This would allow the Board to make a decision either before or at the convention, before options on some of the properties would expire.

The Commission still has a lot of work to answer important question about these sites. It is our intention to make a single site recommendation after we finish our investigations. However, after we complete our work it is also possible that none of these sites will be recommended. That being said, these are the six sites we have been seriously evaluating:

Huntsville, Alabama

1. Cahaba Shrine Temple
2. University Office Park

Mammoth Cave, Kentucky Area

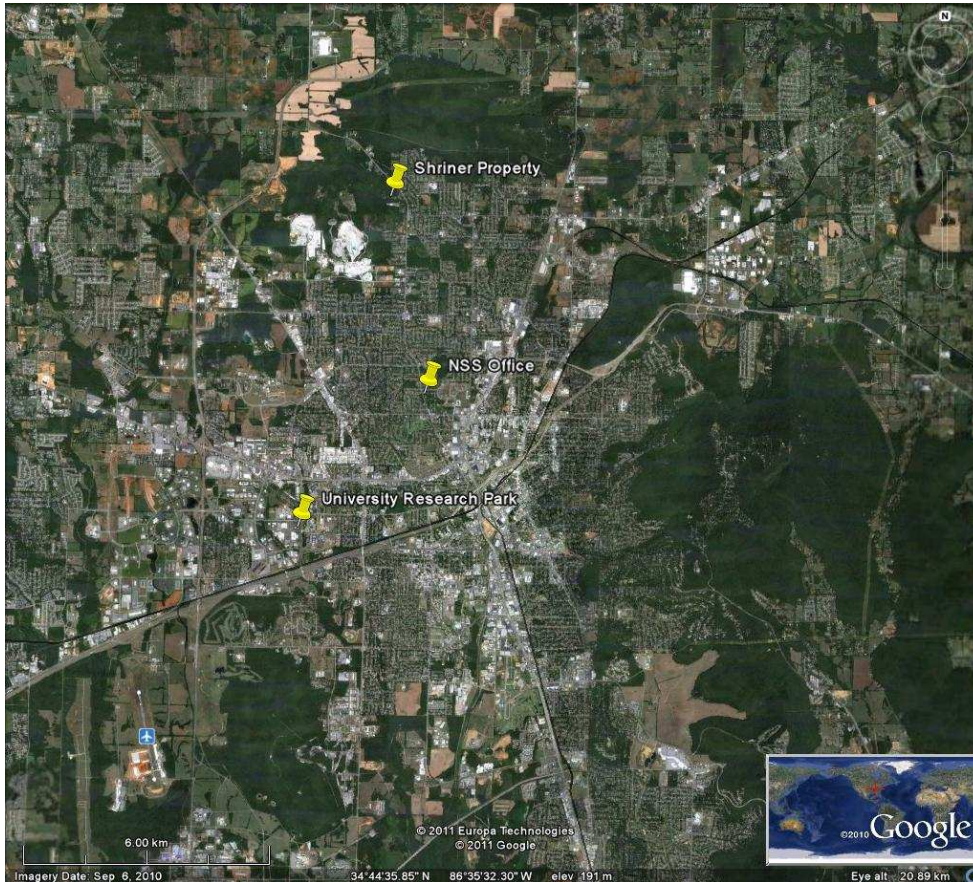
3. Indian Cave
4. Cedar Hill
5. I-65 Interchange at Cave City Exit

Bowling Green, Kentucky

6. Lost River Cave

Huntsville, Alabama

Two potential sites – both existing buildings. The Shriner Temple in NW Huntsville and an office building is University Research Park across from the University of Alabama.



1. Cahaba Shrine Temple

6001 Pulaski Pike

(@ 3 miles north of current NSS Office Site)

Site Description: (89.19 acres in NW Huntsville, containing the site of the Cahaba Shrine Temple. Main building is approximately 31,580 square feet plus five outbuildings, shelters and garages totaling another 9,200 square feet. The main building is single story, slab on grade, metal building framework, with concrete block walls and metal roof. Building is 33 years old constructed in 1978. Paved parking lot. Grounds have picnic, camping, and outside entertainment areas.

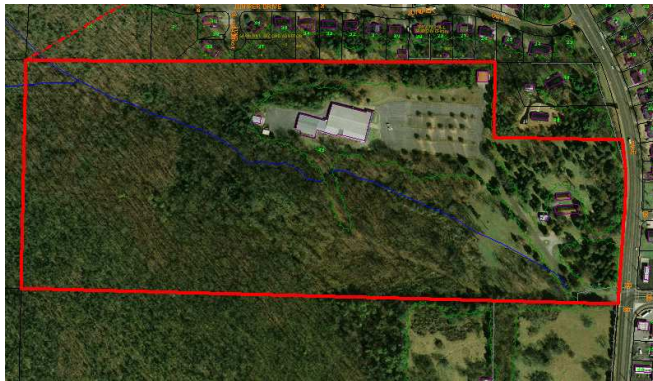
Building is used for Shriner meetings and public functions to include rental Banquet Hall, annual Gun and Knife Show, and annual Blue Grass Festival.

Main building will require remodeling, repair and refurbishing to meet NSS needs. Total extent and cost currently being determined by HQ

List Price: \$1,950,000



Cahaba Shrine Main Building

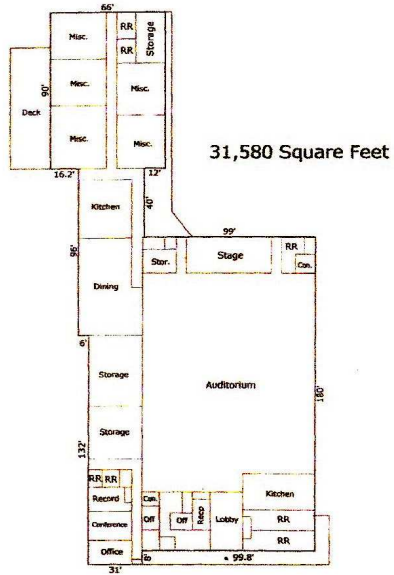


Arial View



Main Auditorium

Cahaba Shrine Temple
6001 Pulaski Pike
Huntsville, AL 35810



Main Building Floor Plan



Picnic Shelter & Concession Stand



Repairs required



Huntsville, Alabama

2. University Research Park

511 Sparkman Drive

Site Description: Professional Office building located across the street from the University of Alabama campus. Originally constructed in the 1960's, the Building is 17,000 square feet with a partial basement. Building will require remodeling and refurbishing to make it useable and to meet NSS needs.

List Price: \$2,500,000



511 Sparkman Drive



Central Meeting Room



Mammoth Cave Area



The NSS Board passed a resolution more than a year ago indicating their preference to locate the new NSS Headquarters in the Mammoth Cave National Park area. Mammoth Cave is the longest cave in the world and a World Heritage Site. In addition Mammoth Cave and the surrounding area has been designated an International Biosphere by the United Nations. Each year 400,000 people from all over the United States and world take a cave tour in Mammoth Cave. Three of the senior staff at Mammoth Cave National Park are NSS members to include the Deputy Superintendent. The Superintendent of Mammoth Cave national Park strongly advocates that the new NSS Headquarters be located near Mammoth Cave National Park (See letter below).

Western Kentucky University (WKU), which is located in nearby Bowling Green Kentucky, has one of the nations foremost cave and karst study programs. WKU has a full time employee at Mammoth Cave National Park to assist the park in coordinating cave research, conservation and educational projects. WKU, which also sponsors many international cave science projects, is also a strong advocate of locating the NSS Headquarters in the central Kentucky (see letters below). WKU would like to develop a stronger partnership with the NSS in promoting public outreach education and cave science programs.

Mammoth Cave Area:

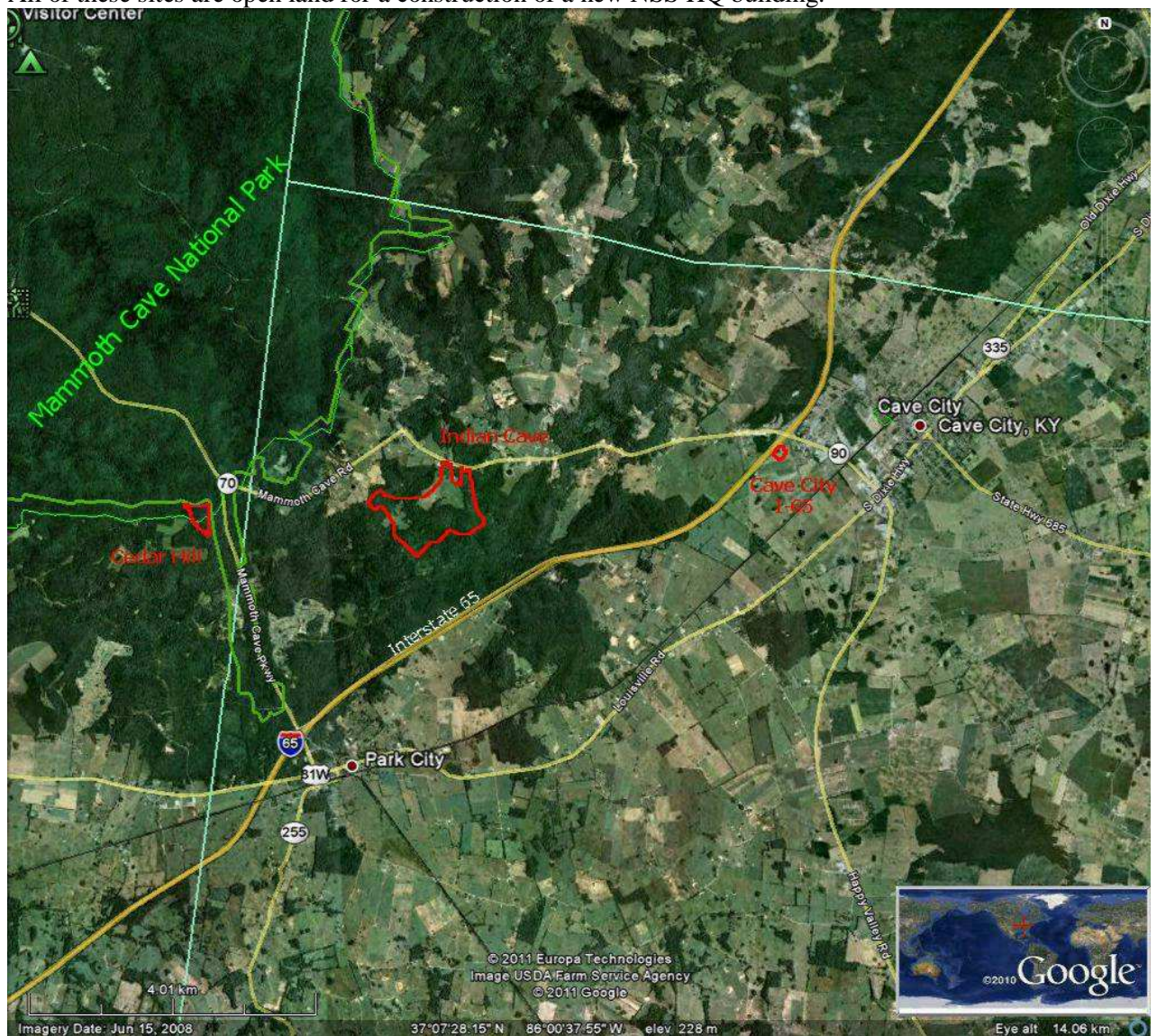
Of the many potential sites the HQ Commission has looked at in the Mammoth Cave area, three offer characteristics that make potential candidates for the new NSS Headquarters. These sites are:

Indian Cave Site located on Mammoth Cave Road (Highway 70) which is the main highway serving Mammoth Cave National Park from I-65 and Cave City.

Cedar Hill located directly adjacent to Mammoth Cave National Park just off the scenic Mammoth Cave Parkway (Highway 255) from Park City to Mammoth Cave National Park.

I-65 Interchange in Cave City.

All of these sites are open land for a construction of a new NSS HQ building.



3. Indian Cave Site

Mammoth Cave Road (Highway 70)

Approximately 3 miles form Cave City and 2 miles to MCNP

Property Description: 237.5 acres located adjacent to Mammoth Cave Road. 37 of the acres (the area closest to the highway) is a farm field currently in a conservation reserve program. The remaining 200 acres is forested Kentucky karst hillside. This property surrounds on three sides an approximately 8 acre site (see plat) containing Indian Cave. Indian Cave is a 3,000 foot dry borehole passage easily accessed in the bottom of a large sinkhole directly adjacent to the highway. (It is actually a very old commercial cave (from the 1920s era – during the cave war period). This 8 acre tract, including the cave is owned by Alex Hicks a local Louisville caver and NSS member. Alex is extremely supportive of the office being located adjacent to his property and has agreed to make Indian Cave fully accessible to the NSS for all purposes of both recreation and education and is willing to enter into a formal agreement to secure NSS access.

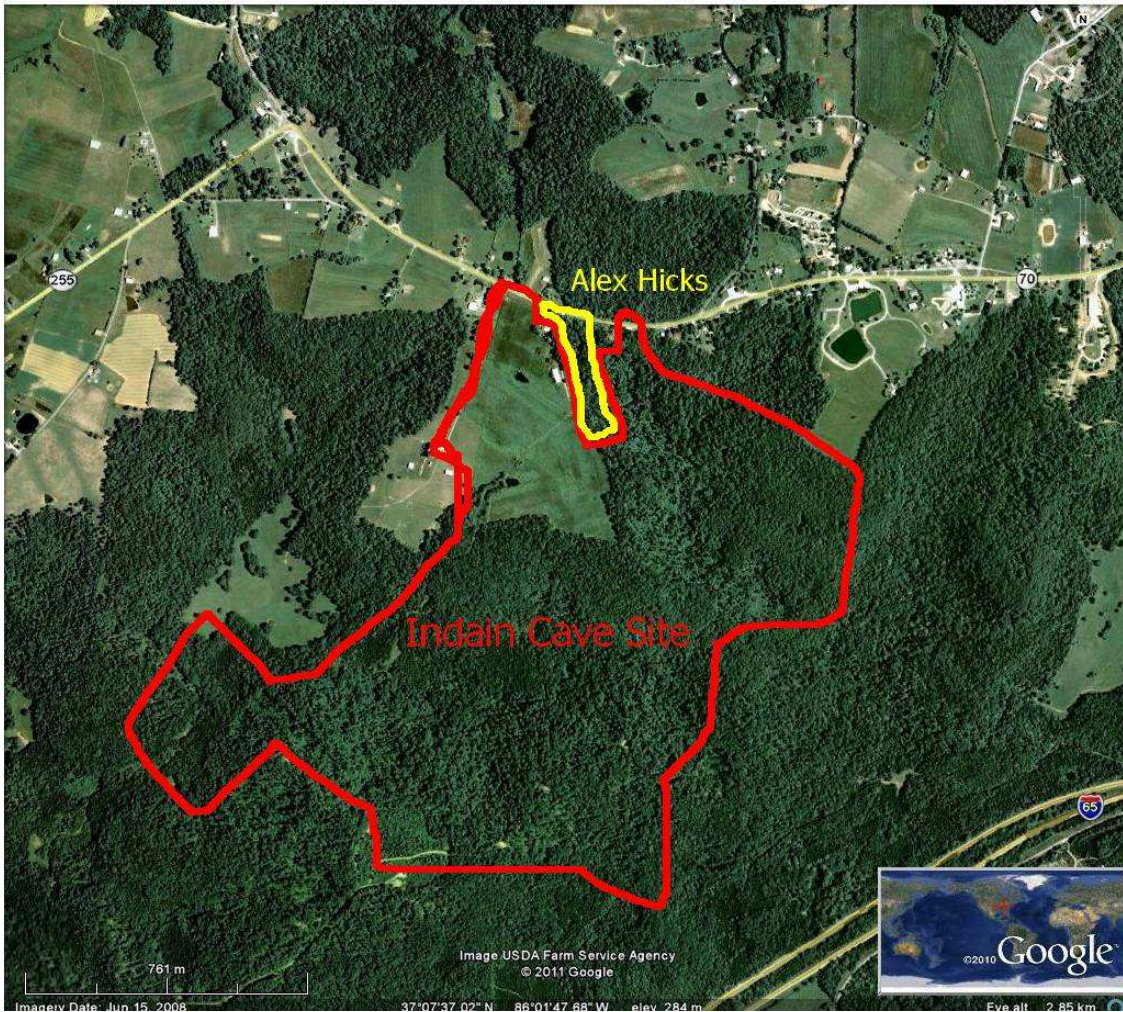
The 206 acres (owned by a Jim Shaw and Burton Kincheloe of Cave City).

Purchase Asking price: \$206,000.

Alex Hicks is willing to share in the purchase allowing the NSS to own a smaller area. Alex's primary concern is to secure the land over Indian Cave and see that no subdivision development takes place around his home site.



Indian Cave Site (open field to right – cave entrance to the left in trees)



Entrance to Indian Cave



Indian Cave

4. Cedar Hill Site

Cedar Hill Road
(approximately 300 feet from Mammoth Cave Parkway)

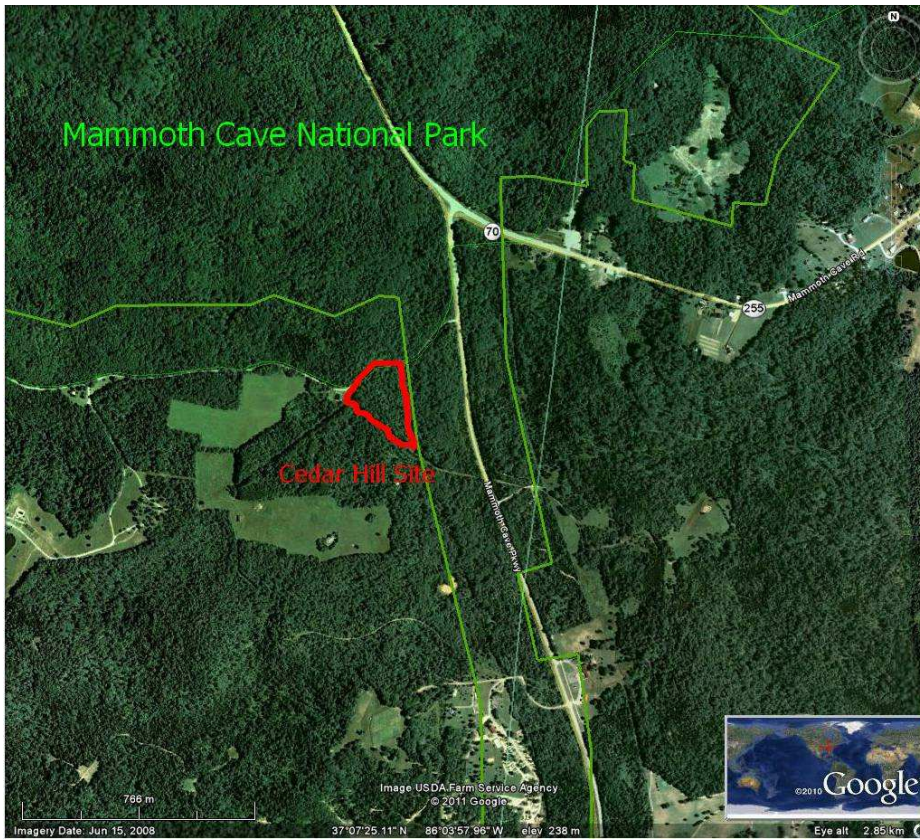
Property Description: This is a 10-acre wooded site on a hill top adjacent to Mammoth Cave National Park. In fact the Park borders the property on two sides. The hill top can be seen as you approach the park from Park City on the Mammoth Cave Parkway. The actual site is relatively flat but wooded.

Property Owner: Ed Arterburn of Park City, Ky.

Asking Price: \$100,000



Cedar Hill Site (Cedar Hill Road on left looking north toward Mammoth Cave Parkway)



Cedar Hill is hilltop on left of road (Mammoth Cave Parkway) heading towards MCNP

5. I-65 Interchange – Cave City, Kentucky

Property Description: This is a high profile location of prime commercial property at the Interstate junction to Mammoth Cave (I-65 and Mammoth Cave Road (Highway 70)). This location is part of a 200-acre farm owned by Don Brandstetter of Cave City. He is a retired contractor/developer and is interested in converting his family farm into professional commercial building sites.

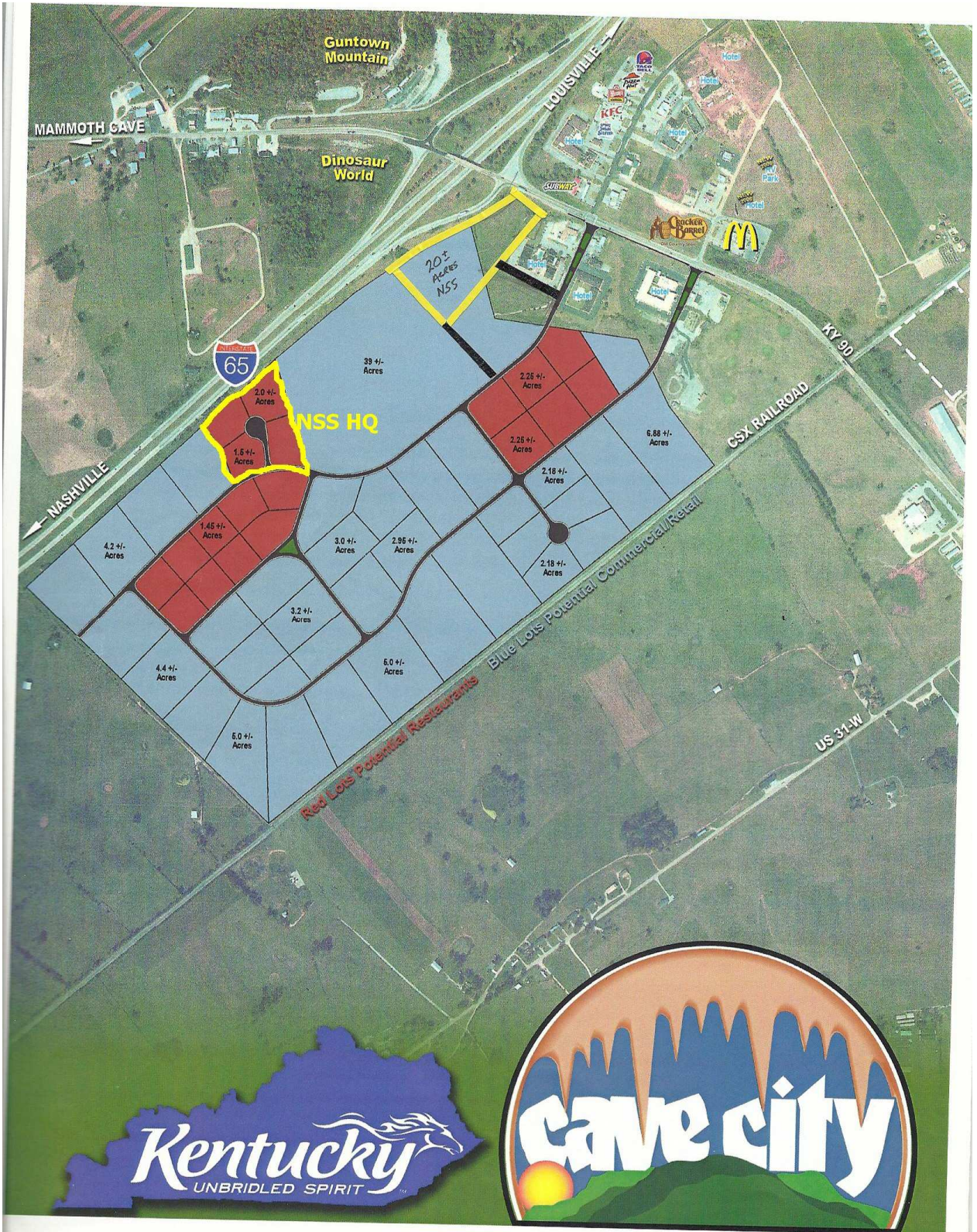
Real estate at this junction very desirable and expensive (in excess of \$100,000 plus per acre as sales in the area to McDonalds, Cracker Barrel, etc. have shown). Cave City public officials are very interested in seeing this property develop as it is good economic growth for their community. The city of Cave City strongly supports the NSS locating its new national Headquarters to this area (see letters below from Mayor and Chamber of Commerce) The City will extend all utilities and roads to the new site.

Asking Price: Since we would be the seed project for development, the property is being offered to us for \$30,000 per acre. The HQ Commission has determined that we would need between 5 and 8 acres for our needs. The area shown below is the high point along the Interstate giving the greatest visibility





Site is across Interstate



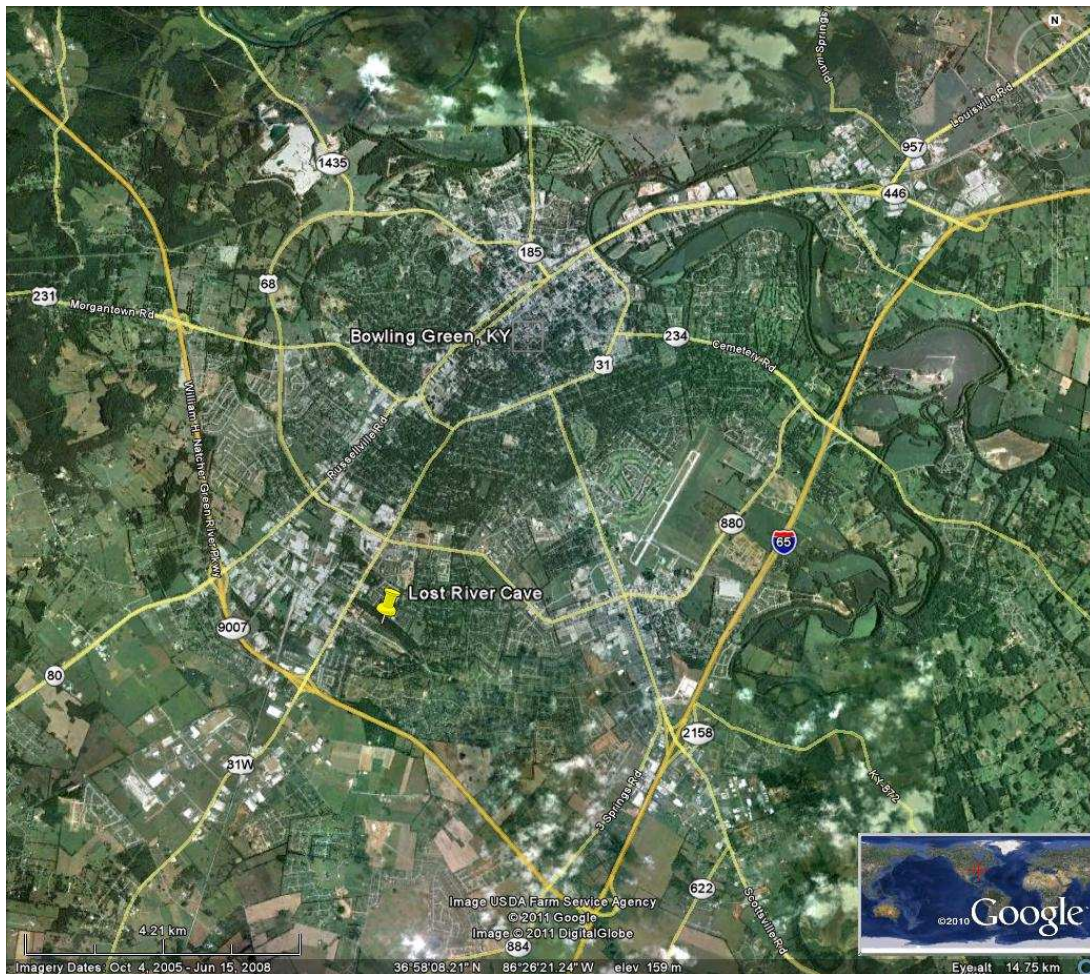
Bowling Green Kentucky

Lost River Cave

Property Description: Lost River Cave in the middle of Bowling Green, Kentucky is owned and operated by a non-profit organization, the “Friends of Lost River”. The cave sits on a 68-acre preserve within a short distance of Interstate 65. Lost River has over 70,000 visitors a year that take a boat tour of the cave. They have a strong working relationship with Western Kentucky University to promote the protection of cave and karst resources. It should also be noted that Lost River Cave, Diamond Caverns and other commercial caves in the area have strong positive relations with each other and have active programs to encourage visitors to see each others caves.

The Friends of Lost River strongly advocate the relocation of the NSS Headquarters to their preserve. They are willing to sell 2 acres of their cave preserve to the NSS for a building site. They anticipate a close, interactive partnership with the NSS to promote cave and karst education. Lost River Cave is planning to construct a \$3 million visitor education center in the near future. A partnership in this venture would seem appropriate if we locate there.

Price range: \$150,000 to \$230,000 subject to negotiation





Building site on Lost River Preserve.



Tourist Entrance into Lost River Cave



Entrance to Lost River Cave

Appendix: Letters of Support

Mammoth Cave National Park – Superintendent Patrick Reed

Western Kentucky University – Dr. Gordon Baylis

Western Kentucky University – Dr. Chris Groves, Dr. Jason Polk, Pat Kambesis

Barren River Area Development District

City of Cave City – Mayor Bob Hunt

Cave City Chamber of Commerce – Greg Davis

Lost River Cave – Rho Lansden



United States Department of the Interior

NATIONAL PARK SERVICE
Mammoth Cave National Park
P.O. Box 7
Mammoth Cave, Kentucky 42259-0007

TRANSMITTED TO:
A3815

December 14, 2010

John P. Scheltens, Chair
NSS Headquarters Commission
National Speleological Society, Inc.
2813 Cave Avenue
Huntsville, Alabama 35810-4431

Dear Mr. Scheltens:

Thank you for taking the time last month to brief me and several members of the Mammoth Cave National Park Management Team on the NSS Headquarters Commission's efforts. We enjoyed the meeting and are very pleased that south-central Kentucky is a potential site under active review and consideration by the Commission. As was stated several times during our meeting, Mammoth Cave National Park very strongly and enthusiastically endorses a relocation of the NSS Headquarters and Library to south-central Kentucky, ideally as close to Mammoth Cave National Park as possible.

Both the National Speleological Society, Inc. and Mammoth Cave National Park were established in 1941, and today, we continue to have a great deal of mission overlap. Our institutions have earned both national and international distinction. NSS Restoration Camps at Mammoth Cave National Park have a 211-year history, with thousands of hours of donated labor provided. In essence, NSS members have made the equivalent of a \$1,000,000 donation to Mammoth Cave National Park for all the difficult in-cave restoration work that has and continues to be performed gratis.

With the NSS located in south-central Kentucky, there would be greatly-increased opportunities for partnering with several institutions in the area that have strong cave-related missions or programs (Cave Research Foundation, Western Kentucky University, American Cave Conservation Association, and others). Having the National Speleological Society, Inc. relocate its headquarters to south-central Kentucky would be a tremendous asset to the strong collection of cave resources and institutions that already exist. Indeed, there would be many mutual benefits. For instance, the NSS library would be a complement to existing library collections at Western Kentucky University, the Cave Research Foundation, Mammoth Cave National Park, and probably other collections as well.

Please contact me at 270-758-2184 if I can be of further assistance in any way. As the Commission completes its work, I would be happy to provide any additional support to the NSS Headquarters Commission in any way that would be useful.

Sincerely,

Patrick H. Reed
Superintendent



A LEADING AMERICAN UNIVERSITY WITH INTERNATIONAL REACH

GORDON C. BAYLIS
VICE PRESIDENT FOR RESEARCH

December 2nd, 2010

John P. Scheltens, Chair
NSS Headquarters Commission
27750 Cascade Road
Hot Springs, South Dakota, 57747

By email to jscheltens@caves.org

Dear Mr. Scheltens

It was indeed an informative and enjoyable meeting that we had the other week, concerning your deliberations about where to relocate the NSS Headquarters.

As you know, Bowling Green is located in the heart of Kentucky cave country, and WKU has long standing and productive relationships with Mammoth Cave National Park, the Cave Research Foundation and the local community, as well as Lost River Cave and other caves in the area, some of which we own. The WKU Hoffman Environmental Research Institute continues to grow in stature through its international programs in karst research and education and as we develop expanding certificate programs in karst studies.

WKU has already evolved beyond a typical comprehensive university to become a university that is highly engaged with the community with applied research and numerous partnerships with constituents in the community. As Vice President for Research I am keen to increase our positive impact on institutions outside of the academy.

Because of the critical mass of caves and cave researchers, as well as the engaged ethos of WKU, I cannot imagine a better environment for your national headquarters. Furthermore, the quality of life in Bowling Green is outstanding, with all the advantages of a rural small town, as well as the amenities of a larger city. There are many "secrets" about Bowling Green that are to your advantage – easy road accessibility in all directions, excellent internet connectivity are two key factors. Indeed there is much to be said for the location immediately adjacent to our Center for Research and Development where it would (I believe) be relatively easy to gain access to very high bandwidth connections.

As I understand your ambitions with the new NSS Headquarters, your plan is to develop a greater emphasis on outreach and education of the public, as well as curation of collections,

The Spirit Makes the Master

Office of Research | Western Kentucky University | 1906 College Heights Blvd #11026 | Bowling Green, KY 42101-1026
Phone: 270 745 6733 | Fax: 270 745 4211 | email: gordon.baylis@wku.edu
Equal Education and Employment Opportunities

research and so forth. Perhaps it goes without saying that these are the daily activities of WKU, and we often and gladly work with constituencies outside of our walls on projects related to teaching and research. I sincerely believe that we could be an outstanding partner and resource for the NSS as you evolve in this direction. I will be delighted to assist you in getting access to whatever scholarly expertise you need.

I appreciate that the vision of the NSS is evolving to one where the basis for protecting caves and karst resources is through informed education about them, and with this in mind I sincerely believe that locating the NSS headquarters in Bowling Green, KY, would be a very positive move for everyone: NSS, Bowling Green and WKU. We are more than willing to help you in any way we can.

Sincerely



Gordon C. Baylis, D.Phil.
Vice President for Research
President, WKU Research Foundation

The Spirit Makes the Master

Office of Research | Western Kentucky University | 1906 College Heights Blvd #11026 | Bowling Green, KY 42101-1026

Phone: 270 745 6733 | Fax: 270 745 4211 | email: gordon.baylis@wku.edu

Equal Education and Employment Opportunities

Department of Geography
and Geology
270-745-4555
FAX: 270-745-6410



Western Kentucky University
1 Big Red Way
Bowling Green, KY 42101-3576

January 17, 2011

NSS Headquarters Commission
Mr. John Scheltens
Chairman

Dear John,

We want to first thank you and the Commission for your recent visit to Bowling Green to meet with representatives from Western Kentucky University (WKU) regarding the relocation of the NSS Headquarters. We feel there is a great opportunity for synergy between the NSS and WKU, particularly within the Hoffman Environmental Research Institute and the Department of Geography and Geology, as we share the common goals of education and research toward the preservation and conservation of karst landscapes. Fortunately, south-central Kentucky is a prime location for these types of activities, with the prominent karst landscape and presence of Mammoth Cave, and as such successfully draws much attention and visitation by interested parties on both the national and international scales.

As we have indicated in our discussions, as long-term NSS members we have confidence that the leadership of the NSS will make the best decisions regarding the future of the Society, and our purpose is not to lobby the Commission. If the Headquarters does move to Kentucky, however, WKU is very pleased to offer support and resources to help the NSS move forward through synergy with our existing programs.

The Hoffman Institute, within WKU's Department of Geography and Geology, includes the Center for Cave and Karst Studies, the Crawford Hydrology Lab, China Environmental Health Project, and other national and international grant funded projects. We offer both undergraduate degrees in both Geology and Geography, as well as an MS degree in Geoscience, all with a possibility of an emphasis in cave and karst studies. We also work regularly with post-doctoral scholars through funded research projects. Also, in Fall 2011, we will begin offering a certificate program at the undergraduate and graduate degree in Karst Resource Management. Prospective students are attracted primarily by the international reputation of the Hoffman Institute and the Center for Cave and Karst Studies. Of the 83 theses produced over the past twenty years, thirty-four theses were directly related to karst studies (41%), with University Distinguished Professors Nick Crawford and Chris Groves supervising most of these projects.

A partial list of key WKU cave-related activities include:

1. Center for Cave and Karst Studies. Through Center's the Karst Field Studies Program, since 1980 hundreds of students from around the US and world have been trained, with many receiving university credit for courses taught by leading karst scientists brought to WKU as visiting faculty each summer.

2. Interactions with Mammoth Cave National Park. There has been close collaboration for 30 years in education and research between WKU the Park in education and research. Over 5,000 WKU students have been through tours of Mammoth Cave associated with coursework, and numerous MS theses have been completed based on research in the Park. In addition, there has been extensive work in exploration and survey of area caves in collaboration with Cave Research Foundation (CRF) and otherwise, in fact three current WKU scientists are past presidents of CRF.
3. The Green River Grotto of the NSS has been based at WKU since the late 1970's.
4. WKU owns the Crump's Cave Educational Preserve, 20 minutes from the WKU campus.
5. The Hoffman Institute's China Environmental Health Project (CEHP) has been active in pure and applied research in the karst areas of southwest China since 1995. This has included extensive training in karst hydrogeology and water resources for Chinese students, scientists, and government officials with the support of the US Agency for International Development. In 2009 CEHP facilitated a cooperative agreement between Mammoth Cave National Park and UNESCO's South China Karst World Heritage Site.
6. There are numerous other international research and educational interactions in karst science and caving between WKU scientists and students and partners in Slovenia, Barbados, Puerto Rico, Belize, Vietnam, Jamaica, Nigeria and other countries, along with extensive ties with UNESCO scientific efforts.
7. In June 2011 we will host the International Conference on Karst Hydrogeology, the fourth such meeting held here since 1998.

We appreciate the efforts that the Commission to evaluate this critical decision for the future of the Society and are please to provide additional information.

Sincerely,

Chris Groves, Ph.D.
NSS 15561 and Director, Hoffman Environmental Research Institute

Jason Polk, Ph.D.
NSS 55322 and Associate Director of Science, Hoffman Environmental Research Institute

Pat Kambesis
NSS 17304FELB and Associate Director of Education, Hoffman Environmental Research Institute



HOWARD GARRETT, Chair
 JIM HENDERSON, Vice Chair
 JOE CARRICO, Secretary
 ELAINE WALKER, Treasurer
 RODNEY KIRTLEY, Executive Director

February 17, 2011

John Scheltens, Chair
 NSS Headquarters Commission
 27750 Cascade Road
 Hot Springs, South Dakota 57747

RE: National Headquarters – National Speleological Society, Inc.

Dear Mr. Scheltens;

I am writing to express the Barren River Area Development District's (BRADD) support for the potential location of the National Speleological Society, Inc. headquarters in the Barren River region of Kentucky. The BRADD is the regional development agency for this ten county area located in Southcentral Kentucky.

The addition of your headquarters to our community will be an ideal complement to the existing agencies and facilities dedicated to the protection and enjoyment of the unique topography and natural beauty of our cave country. Your headquarters will supplement the tourism, educational and research efforts that are in place and expanding.

The Man and the Biosphere Reserve designation, secured in a cooperative effort by the Mammoth Cave National Park and the BRADD, complements these efforts and will be an added resource for your operation. The Biosphere Reserve encompasses six of our ten counties and is dedicated to encouraging sustainable economic development and the protection of biodiversity and cultural values in the area surrounding Mammoth Cave National Park.

You will find that the area is centrally located to a significant population in the eastern United States with excellent access through the interstate and parkway system. Access by air is available through international airports in Nashville and Louisville, each of which are about an hour away, and a business class (level III) regional airport in Bowling Green that accommodates private and corporate flights. We have an excellent workforce with a strong work ethic, low utility rates, affordable land, and a wonderful quality of life. I feel that these factors will be advantageous for your efforts and your membership and provide you the opportunity for future expansion of your mission.

177 GRAHAM AVENUE

BOWLING GREEN, KY 42101

TELEPHONE 270-781-2381

FAX 270-842-0768



Mayor Bob Hunt

CITY COUNCIL

Carol Ford
Mike Houchens
Dwayne Hatcher
Buddy Wilshire
Gary Hogan
Denny Doyle

Pamela N. Hunt, CKMC
City Clerk/Treasurer
ABC Adm.



"Working Together for a Better Future"

CITY OF CAVE CITY

P. O. Box 567 – 103 Duke St.

Cave City, KY 42127-0567

Ph. 270-773-2188 – FAX 270-773-4522

Toll Free 877-773-2188

E-mail cityhall@caveland.net

City Attorney
Bobby H. Richardson

Police Chief
Billy G. Minton

Fire Chief
Kenneth Moulder

Maintenance Supervisor
Roger Scott

Code Enforcement
David Faulkner, Chair
Robert Smith, Enforcement

December 15, 2010

John Scheltens, Chair
NSS Headquarters Commission
27750 Cascade Road
Hot Springs, South Dakota 57747

RE: National Headquarters – National Speleological Society, Inc.

Dear Mr. Scheltens;

I can't tell you how excited I am about the prospect of the National Speleological Society, Inc. Headquarters locating in Cave City, KY. Cave City is the Gateway to Mammoth Cave National Park and has a wonderful relationship with Superintendent Patrick Reed and his very professional staff. To have such a prestigious entity in the vicinity of Cave City and Mammoth Cave National Park would in my opinion be a perfect setting. We have a very sound tourism base in our area because of the many cave attractions and other related activities located all over this area. The lush forests of Mammoth Cave National Park, along the Mammoth Cave Parkway and the gently rolling hills of our rural landscape would be a wonderful setting for your facility. As you know, Cave City is blessed with Interstate-65 at Exit 53, Hwy 31-W also known as the famous "Dixie Hwy", State Highway 90 and Highway 70 which promote the numbers of tourists who visit Cave City and Mammoth Cave National Park each year.

I want to assure you that every effort will be made to accommodate your needs, and provide resources that will make this a reality for all of us. I think you would be very happy here and find this location to be the best one possible. I have been Mayor of Cave City for almost 18 years now and during that time I have had the opportunity and privilege to get to know people and resources that can make dreams come true.

I have enclosed a sheet with some contact information and logistics for Cave City that will be helpful to you. Please feel free to contact them if you wish. It is my sincere hope that you will consider Cave City, KY as the future home for your headquarters. Feel Free to contact me at anytime.

Very Sincerely,

Mayor Bob Hunt

BH/pnh



Cave City, KY... "It's That Friendly"
"Gateway to Mammoth Cave National Park"
Equal Opportunity Employer

Visit Our Website
Cityofcavecity.com



Chamber of Commerce

December 15, 2010

John Scheltens, Chair
NSS Headquarters Commission
27750 Cascade Road
Hot Springs, Dakota 57747

Re: National Headquarters – National Speleological Society, Inc.

Dear Mr. Scheltens,

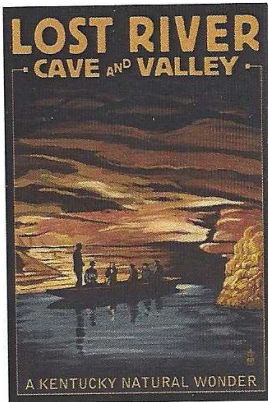
I am greatly pleased to learn of the prospect of the National Speleological Society, Inc. Headquarters' possible relocation to Cave City, Kentucky. Cave City is widely known as the "Gateway to Mammoth Cave" due to its close proximity to the longest cave system in the world. The Cave City Chamber of Commerce has long enjoyed a wonderful working relationship with Superintendent Patrick Reed and his staff. In addition to this, Mammoth Cave National Park has an active representative on our Chamber Board. To have this prestigious entity in the vicinity of Cave City and Mammoth Cave National Park would greatly enhance and compliment our area's tourism industry.

As a community with easy access to Interstate-65 at Exit 53; Highway 31-W; State Highway 90 and Highway 70, a relocation to our unique area offers exposure within a 7 ½ hour drive to 2/3 of the population in the United States.

I, on behalf of the Cave City Chamber of Commerce, offer our support and encouragement to your consideration of our area as a new prominent home for the National Speleological Society Headquarters.

Very Sincerely,

Gregory Davis, President
Cave City Chamber of Commerce



January 12, 2012

Mr. John Scheltens, Chair
NSS HQ Commission
27750 Cascade Road
Hot Springs, SD 57747

Dear John,

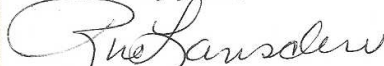
The Friends of the Lost River, Inc. board of directors would like to express their enthusiastic support for relocation of NSS headquarters to Bowling Green, Kentucky. The Friends organization feels that the national reputation of NSS in the field of karst research and conservation will complement the educational programming already offered at Lost River Cave.

We believe that the important resources represented by the NSS membership, archives, and credentials in cave conservation will have a positive impact on the public's karst literacy. A cooperative effort involving NSS, Western Kentucky University and Lost River Cave will enhance protection; provide richer interpretation; and stronger promotion of the cave and karst resources.

The 70,000+ Lost River Cave boat tour visitors who come from around the country and every part of the globe will gain from exposure to the exciting synergy created by our mutual interests. At Lost River there will be no limit to the possibilities for public outreach and professional development already occurring in the both organizations.

It will be a privilege for the Friends of the Lost River to be a part of this initiative. We hope that you will give this site serious consideration in your deliberation with regard to a new location for the NSS home.

Sincerely yours,


Rho Lansden
Executive Director

OFFICERS

Mike Davenport
President

Rick Mitchell
Vice President

Jerry Shelton
Treasurer

Jack Wright
Secretary

Rhoella Lansden
Executive Director

BOARD OF DIRECTORS

Ken Barrow
Eddie Beck

Jim Bullington

Chuck Coates

George B. Corrie

Robert Elrod

Bud Layne

Elinor Markle, RLA, ASLA

Whayne C. Priest, Jr.

Delane Simpson

Tim Slattery